

# Product Improvement Announcement

## New Metal Casings for Zone 2 DS60, DS100C, and DSDC6

Issue date: 3 August 2022

### Product Improvement

Effective August 3, 2022, the Zone 2 DS60, DS100C, and DSDC6 (size 4 devices) will be supplied with a new, improved metal receptacle and inlet casing. These changes elevate the design of the casing so that it is similar in appearance and performance to other MELTRIC product lines.

### Product Improvements

- New robust material. The metal casing is now made of injected Aluminum for improved impact resistance.
- A silicone double-lipped gasket is now assembled in the receptacle casing as opposed to the receptacle lid. This allows for Type 4X, IP69 watertightness when the receptacle casing lid is closed and/or the inlet/receptacle is connected.
- The lid now opens at a 180° angle as standard instead of the previous casing lid which only opened at a 120° angle. The option for a 180° angle is no longer necessary and has been removed.
- New mushroom locking pawl prevents unintended disconnection.
- New inlet casing eliminates the current gasket required for 4X. The legacy gasket is included as part of a kit, to be used if mating with an older receptacle.



## Compatibility

**Zone 2 Size 4 Devices Environmental Rating Compatibility Table**

	Old Receptacle Type 4X	New Receptacle with Gasket Type 4X, IP69/IP69K
Old Inlet Type 4X	4X	Must remove existing 4X inlet gasket or replace existing 4X inlet to achieve mated 4X rating
New Inlet Type 4X, IP69/IP69K	Must add provided inlet gasket or replace existing 4X receptacle to achieve mated 4X rating	4X, IP69/IP69K

## FAQs

### **Will the new and improved metal casing on the receptacle mate with an existing inlet that has a Type 4X rating?**

No. Proper connection of an existing Type 4X inlet with gasket and new style receptacle casing is not possible. The inlet gasket must be removed to achieve Type 4X environmental rating.

### **Can I still order the -180° option for the 180° lid?**

The 180° option is no longer available on the DS60-HAZ because this feature is now standard.

### **Are there new part numbers for the new casing?**

No. The catalog part numbers on the metal receptacle will stay the same.

### **Will there be a price increase?**

No. Pricing will remain the same.

### **Is the casing the same size?**

The actual dimensions are slightly larger on the casing. However, the mounting dimensions remain identical, and the casing remains compatible with existing inlets and all accessories. The drawing for the DS60-HAZ is attached.

### **What is the best way to guarantee Type 4X watertightness when mixing old and new 4X rated devices?**

The best way to ensure a Type 4X seal is to make sure only one of the mating devices has a gasket. The sealing gasket can be on either the inlet or the receptacle, but not both. A spare inlet gasket will be supplied with all new inlets and receptacles along with instructions on how and when it should be used.

# Instructions

## INSTRUCTIONS

### GASKET KIT SUPPLIED with INLET for DS60, DS100C, DR100 and DSDC6

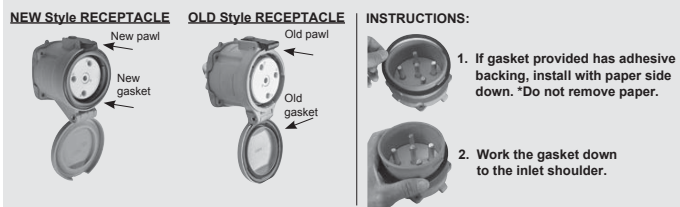
**⚠** These instructions must be followed to ensure the safe and proper installation, operation and maintenance of the MELTRIC devices. Before installation, disconnect all sources of power to the circuit to eliminate the risk of electrical shock.

#### GENERAL

The installation of a gasket is required when a new male inlet will be connected to an existing old style female receptacle (where the gasket is located on the lid) in applications where Type 4X washdown ratings are required. (See below images)

**NOTICE:** A gasket is not required for applications where Type 3R ratings are acceptable (Type 4X washdown ratings not required) or when a new male inlet will only be connected to new style female receptacle.

**NOTE:** Proper connection of an inlet with gasket and new style receptacle is not possible.



**MELTRIC**  
A COMPANY OF MARECHAL ELECTRIC

4765 W Oakwood Park Dr. • Franklin, WI 53132 • 800.433.7642 • Fax: 414.433.2701  
CUSTINF00S6GASKET A

## INSTRUCTIONS

### GASKET KIT SUPPLIED with RECEPTACLE for DS60, DS100C, DR100 and DSDC6

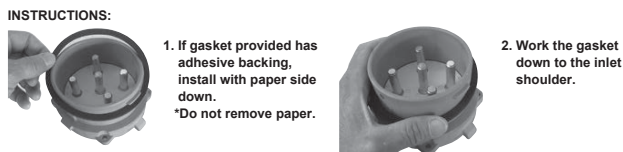
**⚠** These instructions must be followed to ensure the safe and proper installation, operation and maintenance of the MELTRIC devices. Before installation, disconnect all sources of power to the circuit to eliminate the risk of electrical shock.

#### GENERAL

If the inlet to be mated with this receptacle is rated Type 4X and equipped with a gasket as shown, it is necessary to remove the gasket. It is normal that some gasket material remains stuck to the inlet. This will not compromise watertightness ratings.

**NOTE:** Proper connection of an inlet with gasket and new style receptacle is not possible.

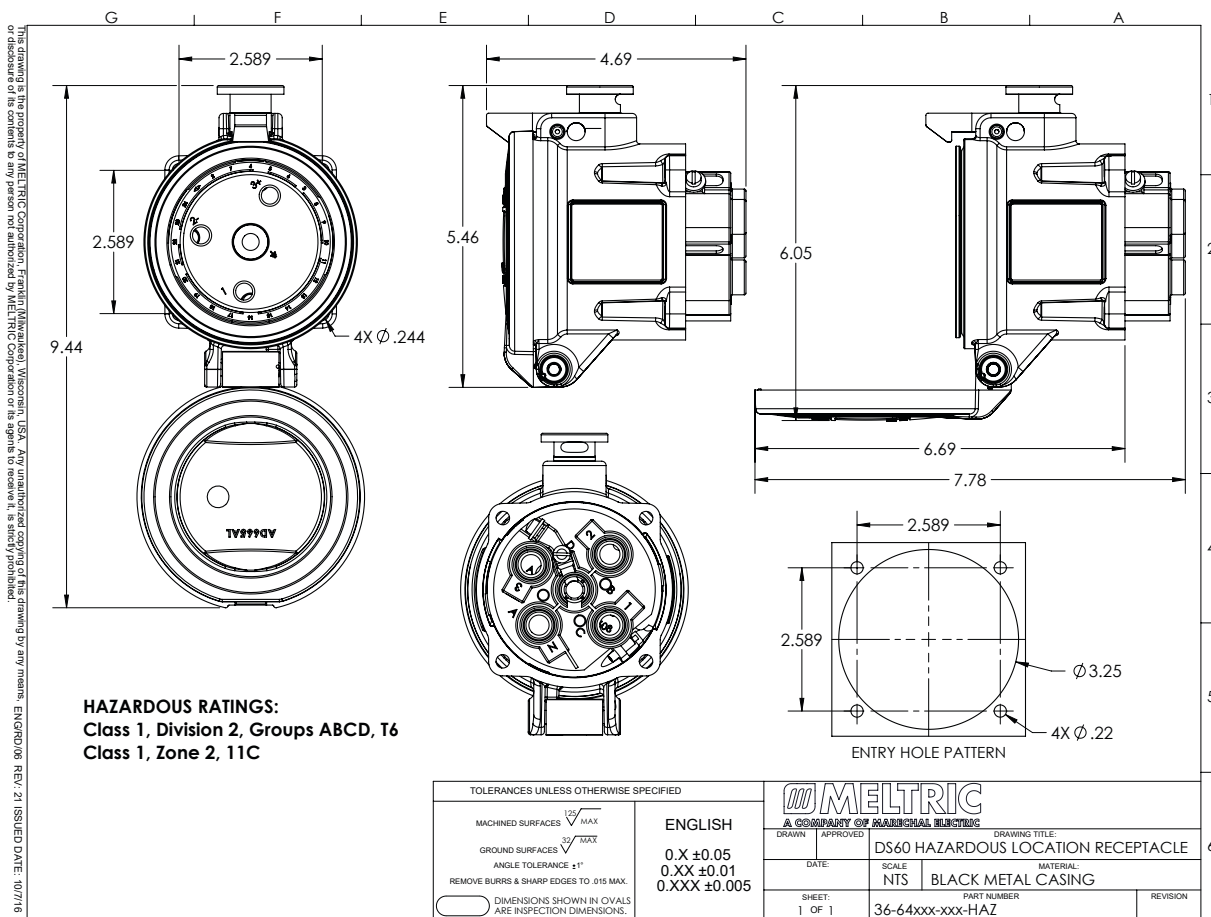
If the inlet that had gasket removed will also be used with old style receptacle, then enclosed gasket should be temporarily installed according to the following instructions.



**MELTRIC**  
A COMPANY OF MARECHAL ELECTRIC

4765 W Oakwood Park Dr. • Franklin, WI 53132 • 800.433.7642 • Fax: 414.433.2701  
CUSTINF00S6GASKET A

# Dimensions



Société d'Exploitation des Procédés Maréchal Copyright

M:\Photo Library\Website\drawings\zn2-ds60\

**meltric.com**

4765 W. Oakwood Park Drive • Franklin, WI 53132  
414-433-2700 • Fax 414-433-2701

©2022 MELTRIC Corporation. All rights reserved. PIAZN2SZ4REC\_A

**MELTRIC**  
A COMPANY OF MARECHAL ELECTRIC