

HOW TO GUIDE

UPGRADING AND RETROFITTING TO SWITCH-RATED ELECTRICAL

**Advanced Savings, Safety, and Reliability:
Choosing the Best Approach to Electrical Upgrades**

Modernize Smarter. Retrofit Safer. Your Way with MELTRIC.



ABSTRACT

This white paper explains the best approach to updating facilities to switch-rated functionality. It makes a case for why you should leave behind legacy connections, like electrician required hardwiring, costly mounted disconnects, cumbersome twist-locks, dangerous straight bladed plugs, and unreliable pin-and-sleeve connections.

This guide provides facility managers, electrical engineers, and safety professionals with practical frameworks for evaluating, planning, and implementing switch-rated device retrofits that deliver measurable improvements in safety, efficiency, and compliance.

CONTENTS

Abstract	2
Summary	4
Introduction – A Case for Electrical Infrastructure Modernization	6
Understanding Switch-Rated Technology	8
What are Switch-Rated Plugs and Receptacles?	8
Technical Standards and Compliance	9
Switch-Rated Connectors: The MELTRIC Advantage	10
Why Retrofit a Facility with Switch-Rated Devices	12
How Easy It Is to Retrofit a Facility	12
Retrofitting Approaches	12
Full Site Retrofit	12
Phased Site Implementation	13
Benefits of Outfitting a Site with Switch-Rated Devices	16
Operation	17
Safety	17
Compliance	17
Cost & Energy Savings	18
Lifespan Longevity	19
Real-World Switch-Rated Install and Upgrade Success	20
Ideal Settings to Retrofit with Switch-Rated Devices	20
Here’s What Real Users Say: Application of Switch-Rated Devices	22
Conclusions	25

Industrial facilities across North America face mounting pressure to modernize aging electrical infrastructure while maintaining operational continuity. Traditional electrical connections, including pin-and-sleeve, twist-lock, and straight-blade devices, create safety hazards, compliance challenges, and operational inefficiencies that directly impact profitability.



SUMMARY

Industrial facilities across North America face mounting pressure to modernize aging electrical infrastructure while maintaining operational continuity. Traditional electrical connections, including pin-and-sleeve, twist-lock, and straight-blade devices, create safety hazards, compliance challenges, and operational inefficiencies that directly impact profitability.

THE BUSINESS CASE

Switch-rated plugs and receptacles represent a transformative solution that consolidates plug, receptacle, and disconnect switch functionality into a single device. Facilities implementing **MELTRIC Switch-Rated DECONTACTOR™** technology report:

- Up to 50% reduction in equipment changeout time (from hours to minutes)
- 100% decrease in arc-flash incidents when operating a switch-rated device
- 5x energy savings over 5-year lifecycle compared to traditional devices
- 30x energy savings over 10-year lifecycle compared to traditional devices

STRATEGIC FLEXIBILITY

This whitepaper outlines both comprehensive and phased retrofit approaches, enabling facilities to modernize according to budget cycles and operational constraints. With adapter plates designed for hundreds of existing wall boxes, most upgrades require minimal rewiring and can be completed during routine maintenance windows.

IMMEDIATE ACTION ITEMS

Facility managers should begin with a risk assessment of high-priority zones (welding areas, washdown stations, frequent changeout locations) where safety improvements and operational gains will be most pronounced. Even partial implementation delivers measurable safety and efficiency benefits while establishing the foundation for facility-wide modernization.



INTRODUCTION



A CASE FOR ELECTRICAL INFRASTRUCTURE MODERNIZATION

THE CHALLENGE

According to the University of Wisconsin-Madison’s College of Engineering, “many components of the U.S. electric grid date back 40 to 70 years, well beyond it’s intended lifespan.” This directly correlates to manufacturing infrastructure and CDP Inc. Research found that “a substantial majority (87%) of executives report that aging infrastructure has had an impact on their operations in recent years.” This age dilemma creates a cascade of operational challenges:

Sources:

<https://interpro.wisc.edu/aging-electric-infrastructure-in-the-united-states/>

<https://www.cdp-inc.com/articles/impact-aging-infrastructure-process-manufacturing-industries>

SAFETY RISKS:

- BLS statistics show **150** workplace fatalities occur each year due to electrocution
- According to ESFI, **96%** of workers fatally injured by electricity were employed by private industry
- Traditional connections expose workers to live conductors during routine maintenance **74%** of workplace electrical fatalities occurred in non-electrical occupations

OPERATIONAL INEFFICIENCIES:

- Equipment changeouts requiring electricians create bottlenecks during unplanned downtime
- Multiple disconnection points complicate maintenance procedures
- Inconsistent connection types across facilities increase training requirements

COMPLIANCE PRESSURES:

- NFPA 70E arc-flash safety requirements demand enhanced protection measures
- NEC line-of-sight disconnect requirements often necessitate costly separate switches
- OSHA emphasis on electrical safety drives need for visible verification systems

Source:

<https://www.esfi.org/workplace-safety/workplace-injury-fatality-statistics/>

<https://www.esfi.org/wp-content/uploads/2024/01/ESFI-Workplace-Fatalities-Infographic.pdf>

ELECTRICAL SAFETY IN THE WORKPLACE



74%

Contact with electricity is one of the leading causes of **fatalities in the workplace**

...of workplace electrical fatalities **occurred in non-electrical occupations** according to OSHA

150

...workplace **electrical fatalities** occur on average **every year** according to the BLS

5.6%

...of all workplace fatalities were **caused by contact with electricity**

THE SOLUTION FRAMEWORK

Switch-rated plugs and receptacles address these challenges through integrated design that combines multiple electrical functions into a single, safety-focused device. Rather than requiring comprehensive facility overhauls, modern retrofit approaches enable strategic, phased implementation that aligns with operational requirements and budget constraints.



UNDERSTANDING SWITCH-RATED TECHNOLOGY

WHAT ARE SWITCH-RATED PLUGS AND RECEPTACLES?

A switch-rated plug and receptacle is an integrated electrical device that combines three traditionally separate components:

1. **Electrical plug and receptacle** for equipment connection
2. **Load-break disconnect switch** for safe circuit interruption
3. **Lockout/tagout mechanism** for maintenance safety

They provide safe and reliable usability that exceeds typical connection points, such as twist-locks, straight-bladed plugs, and pin-and-sleeve devices.

TECHNICAL DEFINITION:

Switch-Rated devices are built to UL 2682 standards (switch-rated plugs and receptacles) and UL 1682 C3 form factors (industrial plugs and receptacles), enabling safe connection and disconnection under full electrical load.

TECHNICAL STANDARDS AND COMPLIANCE

UL 2682 CERTIFICATION:

- Validates devices can safely make and break electrical connections under full load
- Requires arc-containment testing to ensure safe disconnection
- Mandates specific construction standards for mechanical durability

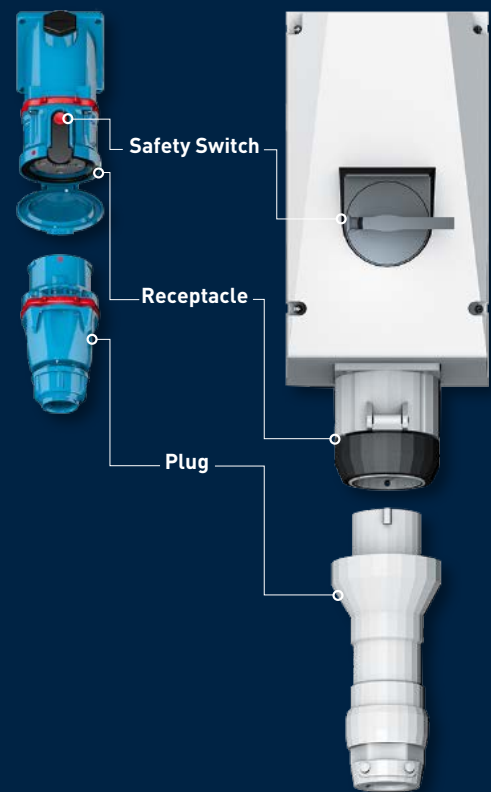
UL 1682 C3 FORM FACTOR:

- Standardizes pin configuration for voltage, phase, and grounding arrangements
- Ensures compatibility with existing industrial electrical systems
- Provides position keying to prevent incorrect connections

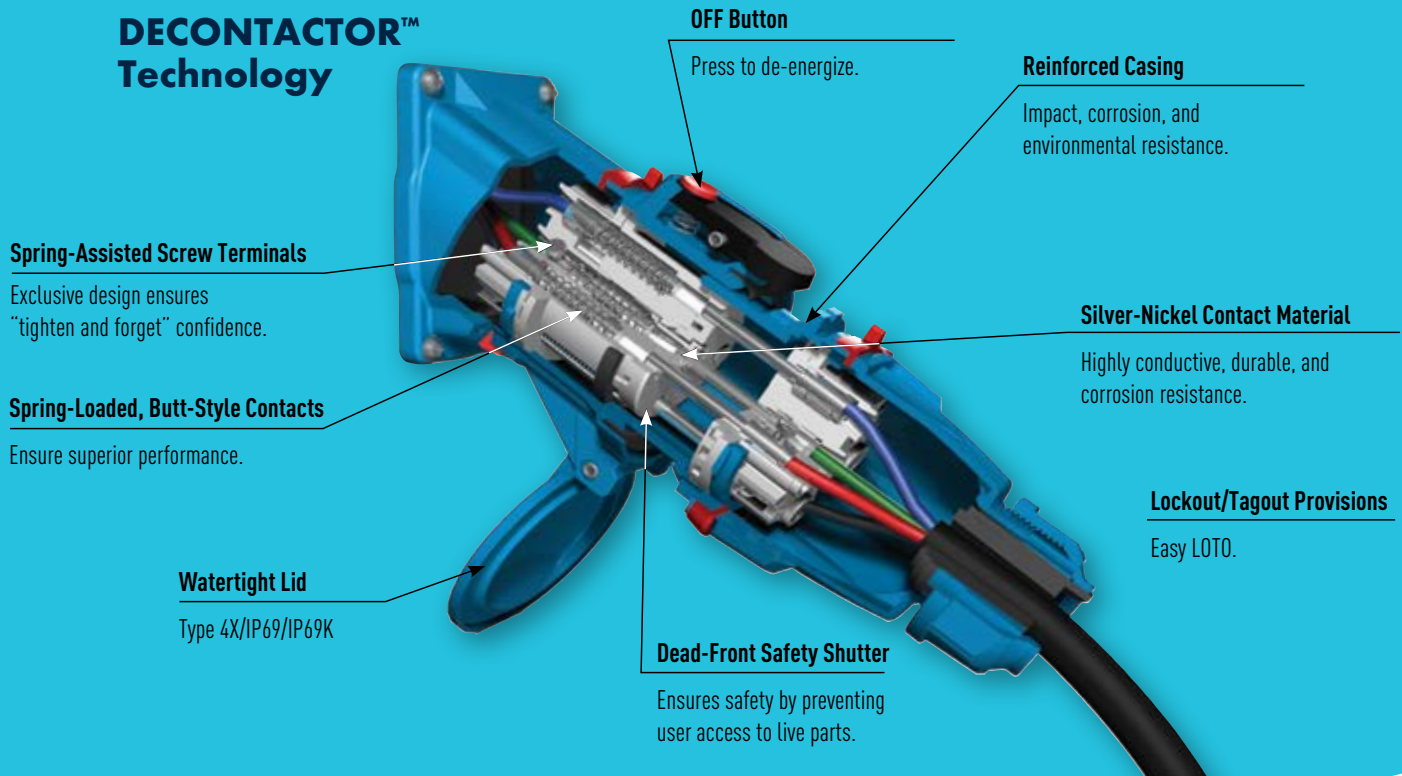
NEC & NFPA COMPLIANCE:

- Article 430.102-109 line-of-sight disconnect requirements
- Article 430.102-109 motor and branch circuit disconnect switching
- NFPA 70E arc-flash safety integration
- NFPA 70B maintenance scheduling

Switch-Rated plugs and receptacles eliminate expensive and bulky non-fused disconnect switches and interlocks.



SWITCH-RATED CONNECTORS: THE MELTRIC® ADVANTAGE



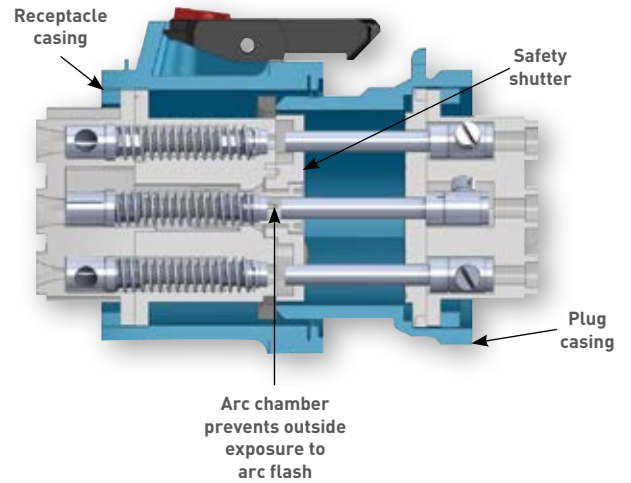
The MELTRIC® Advantage means exclusive Switch-Rated safety that you can rely on and trust. MELTRIC Switch-Rated Plugs and receptacles combine two distinct safety elements in one design. A dead-front safety shutter isolates all live parts, removing the risk of electrical shock to operators. Additionally, an arc-flash chamber safeguards users, allowing them to safely disconnect, even when under load. MELTRIC design helps ensure worker safety while reducing equipment and labor costs.

Most MELTRIC products are UL/CSA rated for motor circuit disconnect switching, and meet NEC code requirements for line-of-sight disconnects. Our devices also include lockout/tagout (LOTO) provisions, are watertight, and simplify NFPA 70E normal operation code compliance. Switch-Rated plugs and receptacles eliminate the need for expensive auxiliary disconnects and enable plug and play equipment changeouts.

Switch-Rated technology incorporates several patented safety and performance features:

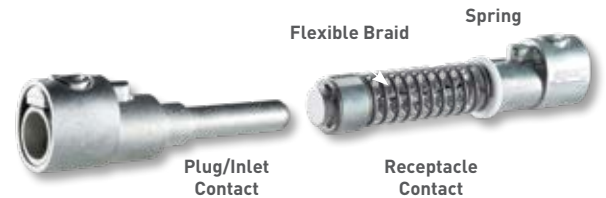
SAFETY SYSTEMS:

- **Dead-Front Safety Shutters:**
Automatically block access to live conductors
- **Arc-Flash Containment Chambers:**
Extinguish electrical arcs within 15 milliseconds
- **Visual Verification:**
Provide clear confirmation of de-energized state
- **Integrated LOTO Capability:**
Built-in lockout points incorporated on devices



PERFORMANCE FEATURES:

- **Silver-Nickel Contacts:**
Spring-loaded butt-style design minimizes resistance
- **Position Keying:**
Prevents incorrect installation and ensures proper grounding
- **Colored Gaskets:**
Enable quick voltage identification for maintenance teams
- **IP69K Rating Options:**
Support high-pressure washdown environments



INSTALLATION ADVANTAGES:

- **Modular Adapter Plates:**
Fit hundreds of existing wall box configurations
- **Flexible Mounting Options:**
Accommodate various conduit orientations
- **Minimal Rewiring Requirements:**
Most installations require no new wire pulls



These design advantages lower total cost of ownership, reduce downtime, and significantly increase safety compared to traditional devices.



WHY RETROFIT A FACILITY WITH SWITCH-RATED DEVICES

RETROFITTING APPROACHES

FULL SITE RETROFIT

A full retrofit provides immediate facility-wide compliance and safety benefits. This approach is ideal during planned shutdowns or major plant overhauls, allowing for consistent training, standardized devices, and simplified maintenance procedures across all equipment.

Optimal Conditions:

- Available capital budget for comprehensive upgrade
- Uniform electrical infrastructure throughout facility
- Regulatory compliance deadlines requiring facility-wide changes
- Scheduled plant shutdowns or major overhauls

Advantages:

- Immediate facility-wide safety and compliance benefits
- Standardized training requirements for maintenance staff
- Simplified inventory management with consistent device types
- Maximum operational efficiency gains

PHASED SITE IMPLEMENTATION

For facilities that cannot afford extended downtime, a phased retrofit offers a more flexible approach. High-priority areas, such as zones with higher arc-flash risk or frequent equipment changeouts, are addressed first. The remaining areas can be scheduled over multiple fiscal cycles, balancing budget constraints with safety improvements.

PIGTAIL WHIPS



ADVANTAGE:

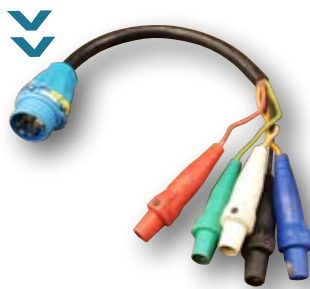
Eliminates the need for conduit rework or wire pulling.

RESULT:

Equipment can be modernized during routine maintenance windows.

Pre-assembled pigtail whips allow existing equipment to be converted to MELTRIC Switch-Rated devices in minutes. These flexible cord assemblies are built to length and terminated in advance, so installation is as simple as disconnecting the legacy device and plugging in the upgraded MELTRIC connector.

WHIPS WITH ADAPTED CORD ENDS



ADVANTAGE:

Keeps equipment operational while upgrades progress.

RESULT:

Flexible scheduling of modernization across fiscal cycles.

For equipment that cannot be upgraded all at once, MELTRIC whips with matched cord ends create a bridge between old and new devices. This enables MELTRIC connectors to be installed on the equipment side first, while legacy connections remain on the supply side (or vice versa) until the full upgrade is completed.

CHEATER CORDS / ADAPTER ASSEMBLIES



ADVANTAGE:

Enables MELTRIC -equipped equipment to run immediately, even before the full facility retrofit is complete.

RESULT:

No need to upgrade all receptacles at once – reducing downtime and spreading investment.

Custom adapter cords (sometimes referred to as “cheater cords”) allow MELTRIC devices to mate temporarily with legacy pin-and-sleeve or twist-lock connections during the transition period.

IMPLEMENTATION APPROACH:

Strategic Prioritization: Phase retrofits based on risk assessment and operational impact rather than convenience or proximity.

1. **Identify Priority Zones** – Begin with high-risk or high-changeout areas (e.g., welding bays, washdown stations, or pump rooms).
2. **Install MELTRIC on Equipment Side** – Use pigtail whips or cheater cords to keep equipment operational.
3. **Upgrade Supply Side Over Time** – Convert wall boxes or supply connections during planned outages or low-load periods.

This staged implementation approach ensures that safety, compliance, and operational gains are realized immediately in critical areas, while remaining zones can be addressed as budgets and schedules allow.

RISK AND OPERATIONAL ASSESSMENT EVALUATION

One of the easiest ways to assess priority is through a safety and operational impact assessment. This is achieved by first determining high and medium priority areas to improve.

High Priority Indicators:

- Documented arc-flash incidents or near-misses
- Equipment requiring frequent disconnection
- Areas with limited electrical expertise among operators

Medium Priority Indicators:

- Equipment with challenging access for lockout/tagout
- Connections requiring specialized PPE
- Areas with mixed voltage systems
- Locations with environmental exposure concerns



Then, one can determine areas where upgrades would make the most operational impact.

- **Critical Path Equipment:** Equipment whose electrical connections directly affect production schedules receives highest retrofit priority.
- **Changeout Frequency Analysis:** Document current time requirements for equipment disconnection and reconnection to quantify potential time savings.
- **Maintenance Complexity Evaluation:** Assess current procedures requiring qualified electricians that could be simplified for operations personnel.



BENEFITS OF OUTFITTING A SITE WITH SWITCH-RATED DEVICES



Switch-rated plugs and receptacles deliver significant cost savings by combining multiple functions into a single device. This integration eliminates the need for separate disconnect switches, interlock hardware, and dedicated wiring runs, reducing both equipment and installation expenses.

By consolidating components, facilities save on upfront capital costs, installation labor, panel space, and future maintenance, while also streamlining compliance with NEC line-of-sight disconnect requirements. The result is a compact, cost effective solution that simplifies design, speeds installation, and lowers total cost of ownership over the life of the system.

OPERATION

Upgrading to MELTRIC Switch-Rated devices delivers measurable financial benefits:



- **Reduced Downtime:** Motor or pump changeouts that once required hours of downtime can be completed in minutes
- **Labor Savings:** Less need for qualified electricians for routine disconnects reduces labor costs
- **Lower PPE Costs:** Built-in arc-flash protection minimizes or eliminates PPE requirements for many tasks
- **Extended Equipment Life:** Durable construction withstands harsh environments, reducing replacement frequency

SAFETY

Safety is built into every MELTRIC device:



- **Dead-Front Safety Shutters** prevent contact with live parts
- **Arc-Flash Chambers** contain hazardous energy during disconnection
- **Visual Verification of De-Energization** provides clear, visible confirmation that power is off
- **LOTO Ready Design** integrates lockout/tagout directly into the plug for enhanced safety

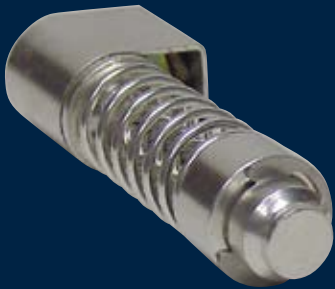
COMPLIANCE

Compliance becomes simpler and more consistent:

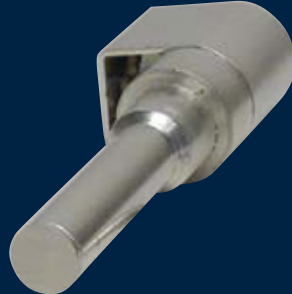


- **UL 2682 Certification** ensures devices are rated for safe load make/break
- **UL 1682 C3 Form Factor** keys specific grounding, position, voltage, and phase arrangement that replaces pin-and-sleeve devices
- **NEC Approval** for use as line-of-sight disconnects reduces the need for separate disconnect switches
- **NFPA 70E Compliance** supports arc-flash safety procedures and OSHA readiness

COST & ENERGY SAVINGS



Silver-Nickel Contact Tip
(85% Ag and 15% Ni)



MELTRIC devices are built with silver-nickel, spring loaded butt-style contacts with extremely low resistance.

MELTRIC devices are built with silver-nickel, spring loaded butt-style contacts with extremely low resistance.

Compared to traditional pin-and-sleeve devices, MELTRIC delivers:

- Up to **5 times more energy efficient in 5 years**
- Up to **30 times more energy efficient in 10 years**
- **Extinguish arcs** in 15 milliseconds

After
5 YRS
MELTRIC provides
up to **5** X more energy efficiency

After
10 YRS
MELTRIC provides
up to **30** X more energy efficiency

**LOWER
OVERALL
COSTS**

All cost comparisons are adjusted for inflation, 2008-2024, rounded to the nearest dollar.

LIFESPAN LONGEVITY

LONG LIVED

It's not often that products last so long. MELTRIC's reputation is based on the unrivalled longevity of its products, which can last from 30 to 40 years or more.



30 to **40** YRS

Unique MELTRIC DECONTACTOR™ Technology optimizes energy transfer across contact tips. The unique butt-style contacts and spring-loaded design reduce errant heat, which prevents premature burnout and extends the life of the device.

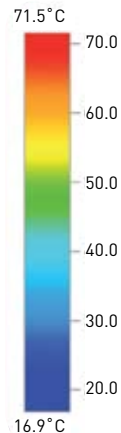
This unique contact tip design:

- **Reduces errant heat at connection points**, reducing power consumption and cooling costs
- **Lessens occurrence of burning up** prematurely or welding of contact surfaces together
- **Prolongs equipment lifespan**, reducing costs associated with replacement

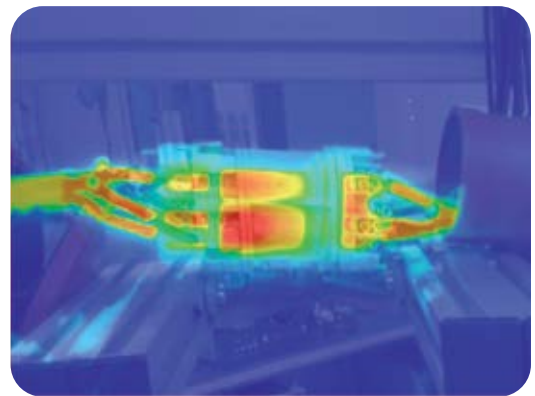
MELTRIC®



Heat Regulation = Long Lifespan



PIN-AND-SLEEVE COMPETITOR



Heat Loss = Short Lifespan



REAL-WORLD SWITCH-RATED INSTALL & UPGRADE SUCCESS

IDEAL SETTINGS TO RETROFIT WITH SWITCH-RATED DEVICES

Switch-rated devices deliver measurable results in safety, cost savings, and operational efficiency. From food processing plants to marine vessels, places that install Switch-Rated devices see consistent benefits: faster changeouts, reduced downtime, and improved compliance.



FOOD & BEVERAGE

Frequent washdowns are simplified with IP69K-rated devices.



WATER/WASTEWATER

Operations facing time-sensitive repairs benefit from PPE-free quick-swap maintenance.



OIL & GAS

Hazardous locations are safer due to built-in arc containment.



MANUFACTURING

Incremental modernization allows for upgrades during regular maintenance windows.



WELDING

Maintaining a safety-controlled environment enables easy, risk-free equipment changes.



MARINE

Durability ensures a functional lifespan that holds up against corrosion and physical abuse.



DATA CENTERS & HVAC

High uptime operations can replace components without shutting down critical systems.

HERE'S WHAT REAL USERS SAY: APPLICATION OF SWITCH-RATED DEVICES

Across industries the pattern is clear, MELTRIC retrofits deliver quantifiable ROI, significant safety improvements, and rapid payback. Facilities consistently report reduced downtime, simplified maintenance, and improved compliance. The proof is in the field, validating MELTRIC as a trusted, real-world proven solution.



FOOD & BEVERAGE:

Van Holten's Pickles experienced simplified washdowns simplified with MELTRIC IP69K-rated devices.



I liked the idea of not needing a separate plug and disconnect box. It not only costs less, but it eliminates one more thing to go wrong in our environment. Before, it was too easy for someone to disconnect something and forget to lock it out properly.

- Project Engineer,
Arland Wingate



OIL & GAS:

Saber Industries experienced cost savings and serviceability improvements that decreased downtime.



With some pin-and-sleeve devices, the terminals are numbered, but you never know how the electrician set them up. Then you have to take them apart to find out. With MELTRIC, you always know which one goes where.

- Lead Electrician,
Ryan Liebschwager



WATER/WASTEWATER:

Richland Public Works in Washington State benefitted from PPE-free maintenance that speed repairs during unpredictable downtime events.



The safest way possible is always going to be the best. The functionality is just a benefit, I think, overall.

- Wastewater/Stormwater
Supervisor, Hector Moreno





MANUFACTURING:

INEOS Chemical drastically reduced changeout downtime while also delivering superior safety benefits through arc-flash protection.



If [a motor] goes bad in the middle of the night, operations can just do a swap-out without contacting maintenance... [It's] now a 15-minute job versus another three to four hours trying to get a solder connection and all that fixed and repaired.

- Electrical Supervisor,
Gregg Kennedy



WELDING:

Portland Community College and Odessa College each experienced improved safety and fully upgraded their facilities with MELTRIC to ensure their students a controlled educational environment.



Once we got an idea of how they worked, we were really impressed with technology, and we wanted to upgrade all the receptacles and plugs in the shop with MELTRIC.

- Welding Instructor,
Matt Scott



MARINE:

The US Coast Guard improved their communications conductor capacity, durability, and halved their expenses.



MELTRIC multipin devices] provided two times the available conductors, eliminating the need for a second shore tie, [cutting] the cost of replacing shores ties in half [and saving] countless man hours in repairs and constructing new shore ties [with a] zero failure rate during testing.

- IT1,
Daniel P. McGregor



Retrofitting with MELTRIC Switch-Rated devices is a strategic investment in safety, compliance, and operational efficiency. Whether upgrading across an entire facility or phasing upgrades over time, MELTRIC delivers safer, faster, and more cost-effective operations.

THE CHOICE IS CLEAR: Modernize Smarter, Retrofit Safer, and Power Forward with MELTRIC.



CONCLUSION

Based on comprehensive analysis of retrofit approaches, costs, and benefits, facilities should adopt a risk-based implementation strategy that prioritizes safety improvements while delivering measurable operational gains. The evidence clearly demonstrates that switch-rated device retrofits deliver quantifiable returns on investment through reduced downtime, enhanced safety, and simplified maintenance procedures.

Retrofitting with MELTRIC eliminates the hazards and hassles of traditional plugs. Our technology ensures compliance, reduces downtime, and supports scalable upgrades.

**Don't wait for accidents to happen.
Upgrade to MELTRIC Switch-Rated Plugs and Receptacles
for smart, safe compliance.**

Plug into **BLUE**





ABOUT MELTRIC® CORPORATION

MELTRIC® Corporation is a manufacturer, distributor, and supplier of a full line of industrial plugs and receptacles, including our signature brand of UL-listed Switch-Rated devices with DECONTACTOR™ technology and push-button circuit disconnection. These all-in-one devices combine the safety and functionality of a disconnect switch with the convenience of a plug and receptacle and can be safely connected and disconnected under full load.

MELTRIC also manufactures other safe and reliable industrial plugs and receptacles, including multipin, high amperage, single pole, and hazardous location devices. Additionally, we use our devices and third-party components to produce custom power distribution units, including portable rubber boxes, mobile or stationary multigang steel enclosures, dual voltage wall boxes, circuit-protected receptacles, and more.

As a safety leader in the electrical products manufacturing industry for over 40 years, MELTRIC designs and builds quality electrical connectors to ensure electrical and user safety. Since 1982, we have manufactured hundreds of thousands of electrical plugs and receptacles that are used safely and without incident in diverse applications in almost every industry. Our product safety record is pristine by design and we're proud of it.

© MELTRIC® Corporation 2025. All rights reserved.



TRY A HIGH-QUALITY DEVICE, FREE OF CHARGE

MELTRIC offers a unique opportunity to try one of their rugged, robust, and safe Switch-Rated plugs and receptacles free of charge. MELTRIC will provide a standard DSN20 or DSN30 sample free of charge for potential new customers with appropriate application and volume opportunities.

To request a free product sample, please submit your contact and application information on the MELTRIC website at www.meltric.com/offer.

The Free Product Offer program is applicable in the USA and Canada only.



meltric.com

4765 W. Oakwood Park Drive • Franklin, WI 53132
414-433-2700 • mail@meltric.com

©2025 MELTRIC Corporation. All rights reserved. WP_UPGRADEANDRETROFIT

MELTRIC
A COMPANY OF MARECHAL ELECTRIC