

# PRODUCT ANNOUNCEMENT

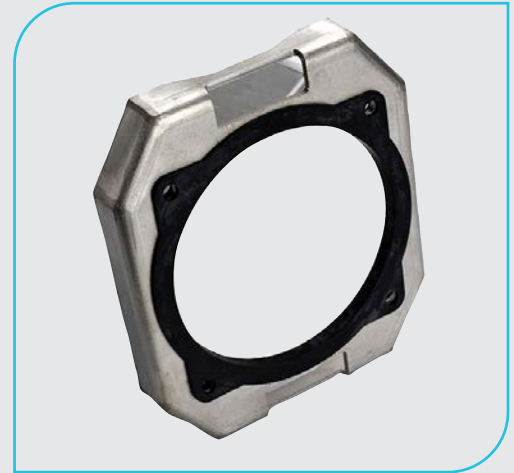
-  QUICK GUIDE CATALOG
-  INSTRUCTIONS
-  DRAWINGS

Issue date: July 11, 2025

## DR400 Compatibility Kit Update

Beginning **July 11, 2025**, MELTRIC will **no longer include the DR400 Inlet Compatibility Kit** (Part Number: **39-4A396**) with each new **DR400 Inlet**.

The compatibility kit will **remain available for individual purchase** in our product catalog. If you are connecting a **new DR400 receptacle or inlet to an older model**, the compatibility kit will need to be purchased **separately as an accessory**.






## CATALOG



Handle Option Guide  
pgs 237-238

### INSTALLATION ACCESSORIES – SIZE 7

When properly installed, all accessories meet or exceed the environmental ratings of the devices they are mounted to; unless otherwise noted.

HANDLES		LARGE HANDLE WITH NPT		PART #	
	2"	5T7PON20			
	2 1/2"	5T7PON25			
	3"	5T7PON30			
LARGE METAL HANDLE WITH CORD GRIP, MESH AND CABLE RANGE		PART #		PART #	
	2.062-2.188"	5T7P0JT1			
	2.188-2.312"	5T7P0JT2			
	2.312-2.438"	5T7P0JT3*		May require stripping of cable jacket.	
	2.437-2.625"	5T7P0KT1			
	2.625-2.812"	5T7P0KT2			
STRAIGHT HANDLE		CABLE RANGE		PART #	
	Bolt-on Clamp	1.57-1.97"	5K6P0D50	1 1/2"	5K6P0N15L
		2.01-2.36"	5K6P0D60	2"	5K6P0N20L
	NPT	2.40-2.76"	5K6P0D70	2 1/2"	5K6P0N25L
		2.79-3.15"	5K6P0D80	3"	5K6P0N30L
ANGLES		METAL ANGLE		PART #	
		0°		5T7M0	
		60° Extended		5T7M6	
BOXES		METAL BOX WITH NPT		PART #	
		0"	2"	7T7F0N20	
		0"	2 1/2"	7T7F0N25	
		0"	3"	7T7F0N30	
		0"	3 1/2"	7T7F0N35	
		0"	4"	7T7F0N40	
		Requires Angle Adapter.			
MISCELLANEOUS ACCESSORIES		PROTECTIVE INLET/PLUG CAP		PART #	
		39-2A426		For Inlet/Plugs Only.	
CABLE REDUCING ADAPTERS (ORDER 1 FOR EACH TERMINAL)		PART #		DESCRIPTION	
		PT535FX350-3		Reducer for 500 MCM Fine Stranded or Flexible Wire.	
		PT500R350-3		Reducer for 500 MCM Coarse Stranded or Building Wire.	
		PT400R350-3		Reducer for 400 MCM Wire.	
INLET COMPATIBILITY KIT		PART #		DESCRIPTION	
		39-4A396			
SPACER		PART #		DESCRIPTION	
		5K7M0-68		68 mm (2.68") spacer is used (included) with metal 60° angle.	
PADLOCKABLE INLET/PLUG CAP		PART #		DESCRIPTION	
		DS2MC		Aluminum – For Inlets/Plugs Only. -A155 suffix required on inlet part # to retain water ingress protection.	
RECEPTACLE LOCKING PIN		PART #		DESCRIPTION	
		LP-843		Requires Padlockable Pawl option (-843) on receptacle.	

### DR400

IMPACT

meltric.com

4765 W. Oakwood Park Drive • Franklin, WI 53132  
414-433-2700 • mail@meltric.com

©2025 MELTRIC Corporation. All rights reserved. PUA DR400COMPKIT A

 **MELTRIC**  
A COMPANY OF MARECHAL ELECTRIC