

PRODUCT IMPROVEMENT ANNOUNCEMENT



QUICK GUIDE

CATALOG

DRAWINGS

Issue date: May 1, 2025

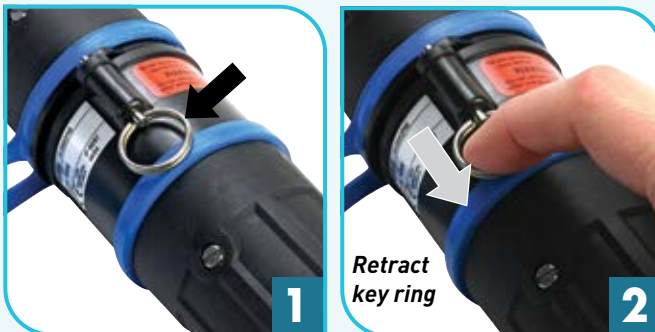
New Tool-Free Unlocking System for CS1000 Inlet

Effective May 1, 2025, the CS1000 inlet will feature a newly integrated, tool-free unlocking system. This upgraded design eliminates the need for a separate disconnection tool, making operation faster and more convenient. The new system includes a stainless steel ring built directly into the locking pin for simplified use.

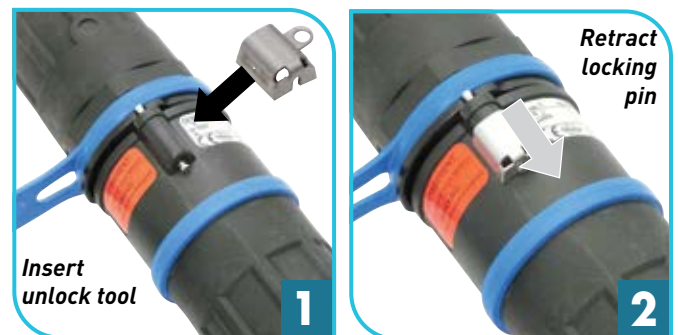
This updated unlocking mechanism is fully compatible with all existing receptacles. For legacy applications that still require the original unlocking tool, part number 453A396 remains available. There will be no price change associated with this product enhancement.



NEW SYSTEM



OLD SYSTEM





CS1000 Standard Duty - 400 A

UL/CSA Ratings

- **Max Amperage**
400 A
Not for Current Interrupting
- **Voltage**
600 VAC, 600 VDC
- **Short Circuit Rating**
10 kA Withstand
Testing was performed with RK1 current limiting fuses sized at least 100% of the device's ampacity rating.
- **Environmental Ratings**
IP66/IP67
- **Temperature Range**
Min -40°F/Max 140°F
See pg 254 for temperatures outside of this range.
- **Wiring Capacity**
Min 1/0 AWG / Max 444 MCM
90°C rated wire required
- **Applicable Standards**
UL 1691, CSA 1691-12, NOM

Receptacle (female) without lug Inlet (male) without lug



! Don't forget to add installation accessories to your order

North American Configurations

VOLTAGE	POLARITY	RECEPTACLE PART # WITHOUT LUG	INLET PART # WITHOUT LUG
≤ 250 V	L1	44-34001-P80	44-38001-P80
≤ 250 V	L2	44-34002-P80	44-38002-P80
≤ 250 V	L3	44-34003-P80	44-38003-P80
≤ 250 V	NEUTRAL	44-3400N-P80	44-3800N-P80
	GROUND	44-3400T-P80	44-3800T-P80
	POSITIVE	44-3400P-P80	44-3800P-P80
	NEGATIVE	44-3400M-P80	44-3800M-P80
> 250 V	L1	44-34001-P88	44-38001-P88
> 250 V	L2	44-34002-P88	44-38002-P88
> 250 V	L3	44-34003-P88	44-38003-P88
> 250 V	NEUTRAL	44-3400N-P88	44-3800N-P88

IEC/CE Configurations

IEC/CE Ratings

- **Max Amperage**
500 A
Not for Current Interrupting
- **Voltage**
1000 VAC, 1500 VDC
- **Environmental Ratings**
IP66/IP67
- **Temperature Range**
Min -40°F/Max 140°F
See pg 254 for temperatures outside of this range.
- **Wiring Capacity**
Min 1/0 AWG / Max 444 MCM
185 mm² stranded
- **Applicable Standards**
CE

EUROPEAN COLOR CODE	POLARITY	PART # POLY	PART # POLY
Brown	L1	4534001	4538001
Black	L2	4534002	4538002
Grey	L3	4534003	4538003
Blue	NEUTRAL	453400N	453800N
Green	GROUND	453400T	453800T
Red	POSITIVE	453400P	453800P
Black	NEGATIVE	453400M	453800M