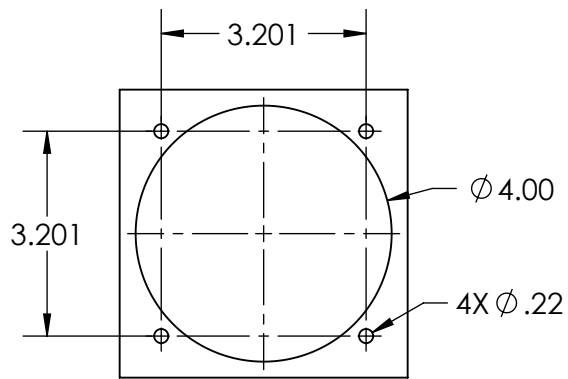
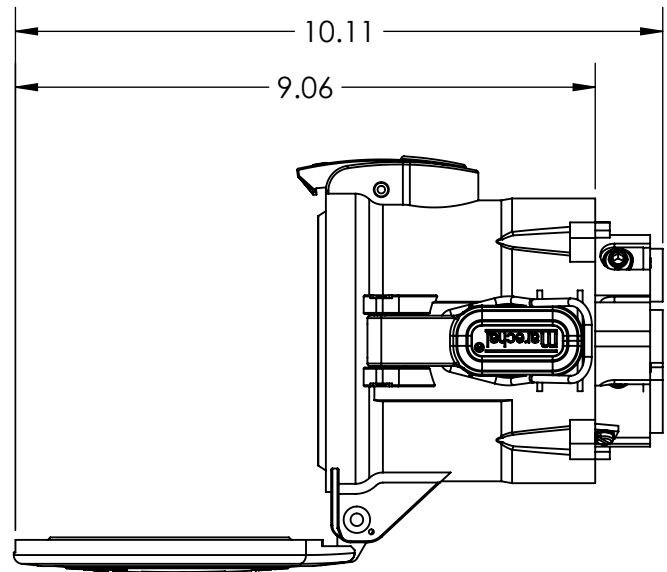
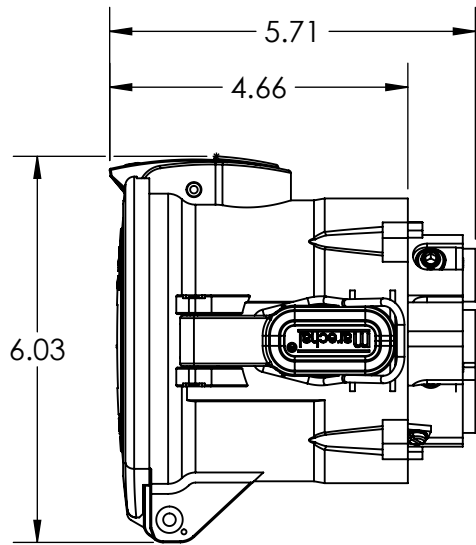
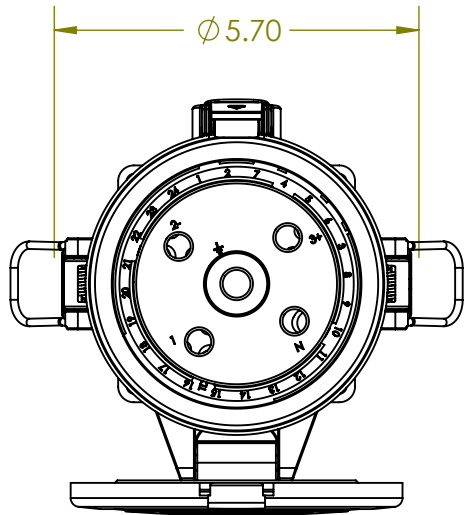
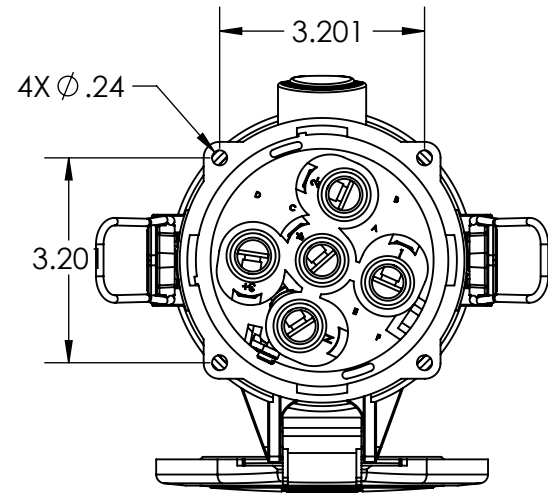

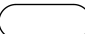


This drawing is the property of MELTRIC Corporation, Franklin (Milwaukee), Wisconsin, USA. Any unauthorized copying of this drawing by any means, ENG/RD/06 REV: 21 ISSUED DATE: 10/7/16 or disclosure of its contents to any person not authorized by MELTRIC Corporation or its agents to receive it, is strictly prohibited.



ENTRY HOLE PATTERN



TOLERANCES UNLESS OTHERWISE SPECIFIED		 MELTRIC A company of MARECHAL ELECTRIC GROUP	
MACHINED SURFACES $\sqrt[125]{MAX}$	ENGLISH		
GROUND SURFACES $\sqrt[32]{MAX}$	0.X ± 0.05	DRAWING TITLE:	
ANGLE TOLERANCE $\pm 1^\circ$	0.XX ± 0.01	DSN150 RECEPTACLE	
REMOVE BURRS & SHARP EDGES TO .015 MAX.	0.XXX ± 0.005	DATE:	SCALE: NTS
 DIMENSIONS SHOWN IN OVALS ARE INSPECTION DIMENSIONS.		MATERIAL: BLUE POLY CASING	
		SHEET: 1 OF 1	PART NUMBER: 63-94xxx
			REVISION