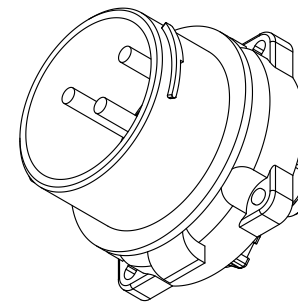
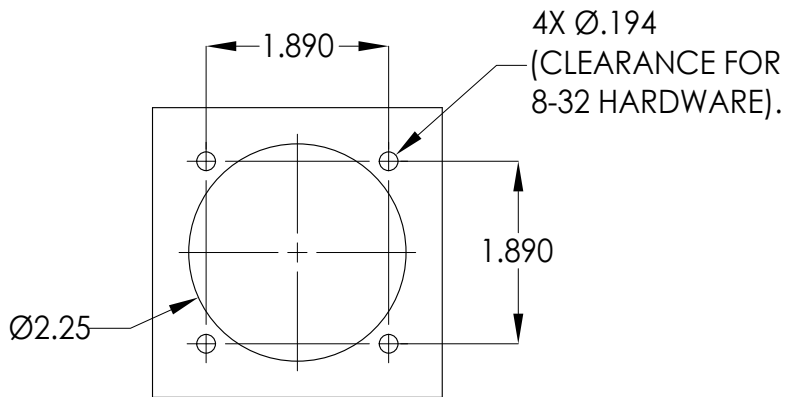
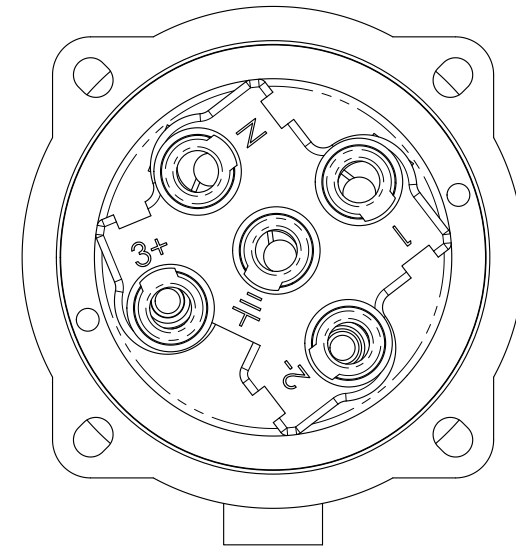
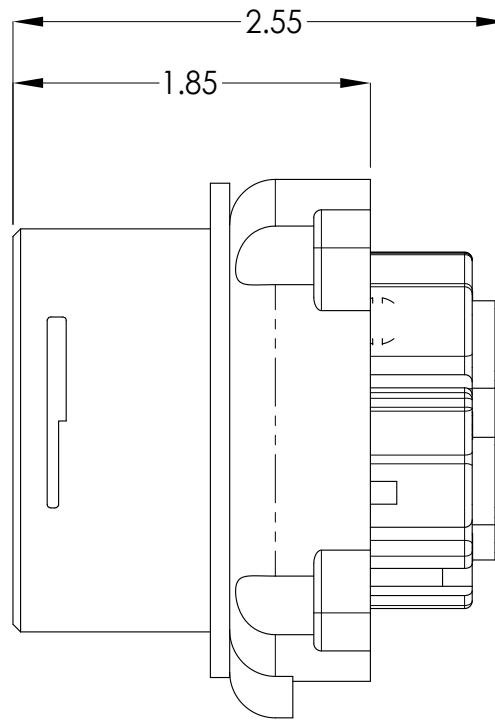
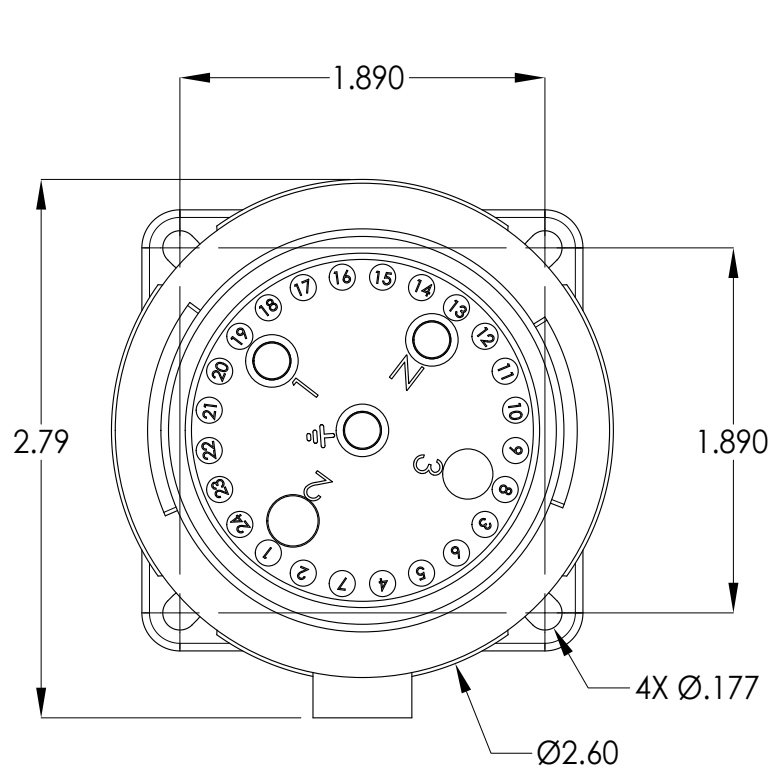



This drawing is the property of MELTRIC Corporation, Franklin (Milwaukee), Wisconsin, USA. Any unauthorized copying of this drawing by any means, or disclosure of its contents to any person not authorized by MELTRIC Corporation or its agents to receive it, is strictly prohibited.

ENG/RD/06 REV: 20 ISSUED DATE: 11/15/11



ENTRY HOLE PATTERN

TOLERANCES UNLESS OTHERWISE SPECIFIED		MELTRIC A COMPANY OF MARÉCHAL ÉLECTRIC		
MACHINED SURFACES $\sqrt[125]{\text{MAX}}$	ENGLISH  0.X ±0.05 0.XX ±0.01 0.XXX ±0.005	DRAWN	APPROVED	DRAWING TITLE:
GROUND SURFACES $\sqrt[32]{\text{MAX}}$		DATE:		SCALE
ANGLE TOLERANCE ±1°		SHEET: 1 OF 1		MATERIAL:
REMOVE BURRS & SHARP EDGES TO .015 MAX.		PART NUMBER		REVISION
 DIMENSIONS SHOWN IN OVALS ARE INSPECTION DIMENSIONS.		DR30 INLET		BLUE POLY CASING
		31-18xxx-Kxx		