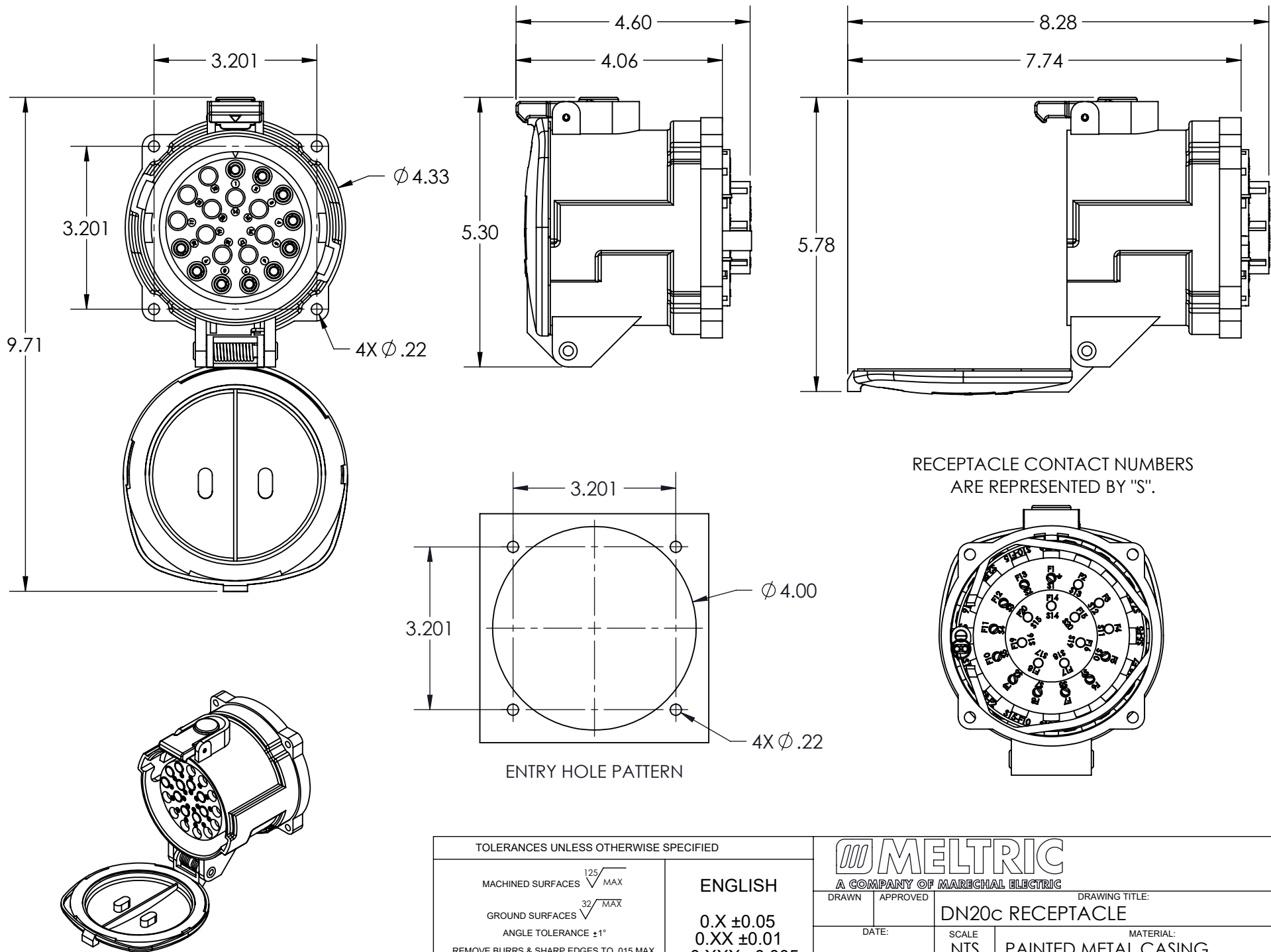


This drawing is the property of MELTRIC Corporation, Franklin (Milwaukee), Wisconsin, USA. Any unauthorized copying of this drawing by any means, ENG/RD/06 REV: 21 ISSUED DATE: 10/7/16 or disclosure of its contents to any person not authorized by MELTRIC Corporation or its agents to receive it, is strictly prohibited.



TOLERANCES UNLESS OTHERWISE SPECIFIED		MELTRIC A COMPANY OF MARÉCHAL ELECTRIC		
<div>MACHINED SURFACES $\sqrt[125]{\text{MAX}}$</div> <div>GROUND SURFACES $\sqrt[32]{\text{MAX}}$</div> <div>ANGLE TOLERANCE $\pm 1^\circ$</div> <div>REMOVE BURRS & SHARP EDGES TO .015 MAX.</div> <div> DIMENSIONS SHOWN IN OVALS ARE INSPECTION DIMENSIONS.</div>	ENGLISH 0.X ± 0.05 0.XX ± 0.01 0.XXX ± 0.005	DRAWN	APPROVED	DRAWING TITLE:
		DN20c RECEPTACLE		
		DATE:	SCALE NTS	MATERIAL: PAINTED METAL CASING
		SHEET: 1 OF 1	PART NUMBER 17-64xxx	REVISION