

**ELECTRIFY
YOUR
POWER**

**HIGH AMPACITY
PLUG & RECEPTACLE**

P66



MELTRIC

HIGH PERFORMANCE MEETS SUSTAINABILITY

Meet **P66**, the efficient & reliable power answer to the greatest challenge to electrifying your industrial operations. **P66** keeps your operation running and safe with an effective connection to electrical power.

Electrify your processes with a connector that makes it easy to expand. Easily integrate renewable, grid, and electrified power for a modern approach to connecting mining machinery, e-frac rigs, gensets, and more.



CAPABILITY

Up to 660 A – 1,100 VAC*



FUNCTIONALITY

3P+N+G Available Polarity



SAFETY

Magnetic Reed Switch



USABILITY

8 Auxiliary Bundle



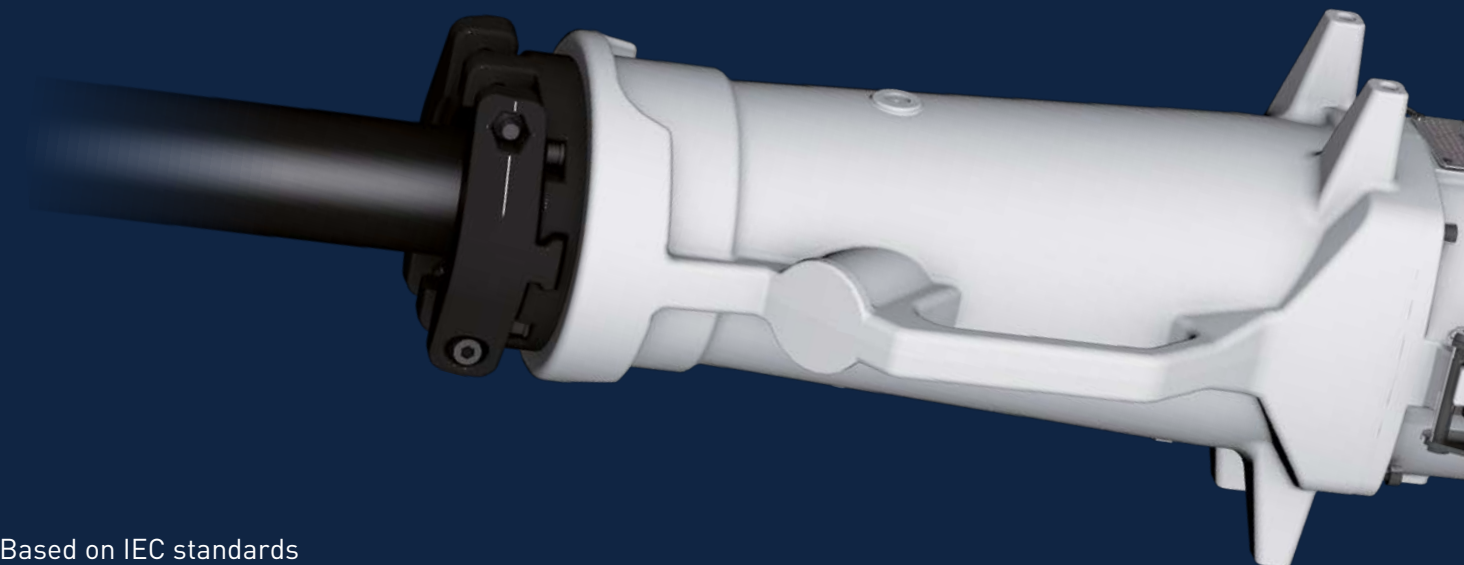
MODULARITY

90° & 180° Configurations
Reversible Drawbars



DURABILITY

IP66/IP67
IK10



* Based on IEC standards



INVEST IN YOUR COMPANY'S FUTURE

POWER YOUR COMPANY'S ELECTRIFIED NEEDS

INVEST IN P66

P66 is an easy-to-use and safe electrical plug and receptacle system that keeps your operations efficient and running without downtime.

MODULAR to fit your needs.

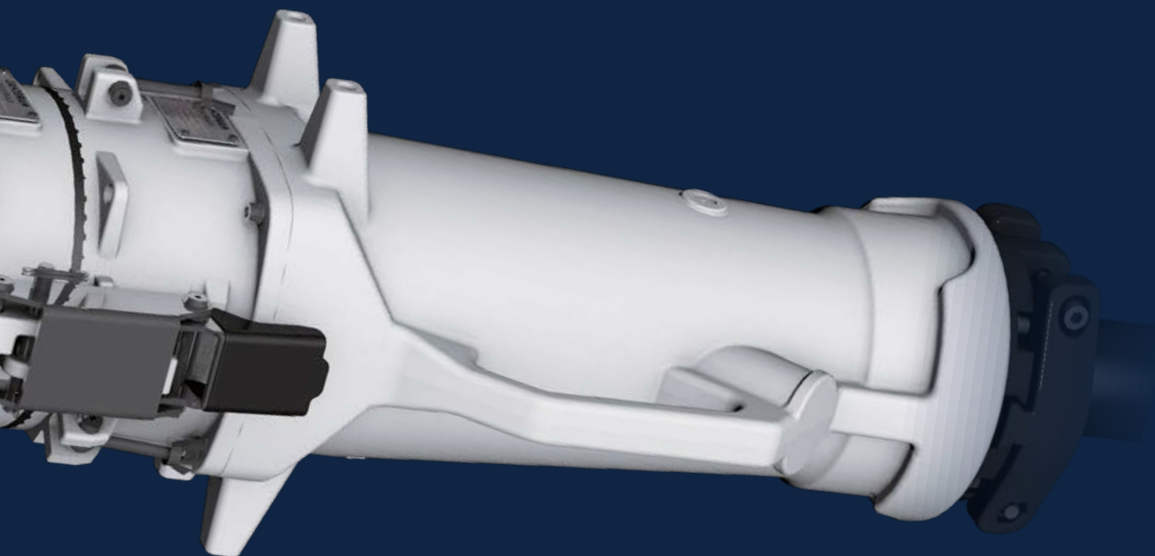
P66 is available in 90° and 180° configurations, with 8 pre-wired auxiliaries, magnetic reed switch activated pilot leads, and reversible drawbars.

ROBUST to withstand tough conditions.

P66 is built with durable corrosion resistance (copper-free casing), water and dust ingress ratings (IP66/IP67), and impact resistance (IK10).

RELIABLE to ensure operational functionality.

P66 is an easy and low-maintenance solution to your electrification needs. The device integrates a magnetic reed switch pilot circuit and a neutral conductor for wye configuration power connections.



MODULAR CONFIGURATIONS & ACCESSORIES



ANGLED HANDLE
ON RECEPTACLE



STRAIGHT HANDLE
ON RECEPTACLE



REVERSIBLE DRAWBARS



PROTECTIVE CAPS

MAIN TECHNICAL SPECIFICATIONS

All ratings based on IEC standards

GENERAL INFORMATION

I_{max}	660 A
V_{max}	1,100 VAC/1,500 VDC
Frequency	≤ 500 Hz
Number of contacts	3P+N+G
Connection main contacts: (flexible & rigid/stranded)	Cage terminal: Min 300 MCM Max 777 MCM Lug terminal: Min 3/0 Max 535 MCM

AUXILIARIES/PILOTS CONTACTS

Number of pre-wired auxiliaries	8
Number of pre-wired pilots	2

NUMBER OF OPERATIONS

Mechanical	2,000
------------	-------

THERMAL RANGES

Operating Temperature min/max	-40 °F/+140 °F
Storage Temperature min/max	-40 °F/+176 °F

MECHANICAL FEATURES

Ingress Protection	IP66/IP67
Impact Protection	IK10
Casing Material	Copper-free aluminum
Mounting Hardware	Stainless steel
Vibrational Resistance	✓
Corrosion & Chemical Resistance	✓

Our friendly engineering and customer service teams are available
Monday - Friday, 7 a.m. - 5 p.m. (Central Time)

Phone: 414-433-2700
Email: mail@meltric.com

MELTRIC excels with the industry's leading delivery times.



Plug into BLUE

meltric.com

4765 W. Oakwood Park Drive • Franklin, WI 53132
414-433-2700 • mail@meltric.com

©2025 MELTRIC Corporation. All rights reserved. P66_A

MELTRIC
A COMPANY OF MARECHAL ELECTRIC