

# MULTIPIN PLUGS & RECEPTACLES

Power, Control, and Monitoring in a Single Device  
Up to 37 Contacts | 4 A to 50 A



# MULTIPIN Plugs & Receptacles



MELTRIC® offers a broad range of multipin devices for use in a wide variety of control and power applications. Each device features MELTRIC spring-loaded, silver-nickel, butt-style contact technology that maximizes durability and performance. Multipin devices are available with as many as 37 or as few as 4 contacts. Products range from 4 A up to 50 A per contact and some include current interruption capabilities. Select models meet UL and CSA standards.



MELTRIC Multipin Devices are available with either crimp/solder or screw type terminals. Each offers different advantages for different applications.

## Crimp/Solder Terminals

PN12c | DSN12c | DSN24c | DS24c | DSN37c | DS37c

Crimp/solder terminals offer a space efficient, easy to work with termination solution. Crimping/soldering of the termination is completed before insertion into the device. This allows the installer ample space and access to terminals during installation.

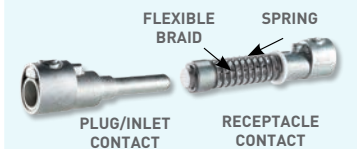
## Screw Terminals

PN7c | DN9c | DN20c | DS7c | DR7c

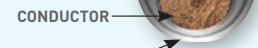
MELTRIC screw terminals have a patented, spring-assisted design that provides permanent and secure conductor connections for the PN7c, DS7c, and DR7c. The patented spring ring design ensures constant pressure against the terminal and conductor. This keeps the terminal screw securely in place and helps to compensate for strand settlement and conductor yield.

Screw terminals are beneficial in situations where resistances to vibration, shock, and thermal cycling are necessary. Standard screw terminals (non-spring assist) are used on the DN9c and DN20c.

- Butt-Style
- Self-Cleaning
- Spring-Loaded
- Corrosion Resistant



The split terminal causes the spring ring to deform from a circle to an ellipse as the terminal screw is tightened.



The spring ring, trying to return to its original circle shape, pushes the conductor and terminal screw tightly together.



## Crimping Contacts Assembly



After completing the terminations, assemble the contacts into the device by pushing them into the appropriate contact holes, from the backside, until they are firmly seated in the insulator.

## Disassembly



A special tool is provided for contact removal. Push the hollow end of the tool around the outer diameter of the contact until it stops, releasing the contact. Each contact can be inserted and removed up to three times.

# MELTRIC® Multipin Advantages

Power and auxiliary combinations to fit any application need.



## Benefits of MELTRIC Design

- Exclusive Safety
- Common Sense Design
- Unmatched Lead Times
- Field Repairable
- Rugged Enough to Handle Harsh Environments

The very design nature of MELTRIC Multipin plugs and receptacles make them the ideal economical and sustainable solution to your industrial needs. Multipin devices are constructed in a modular fashion to offer a wide range of amperage and contact combinations. This ensures an exact fit for any application need and mounting configuration. Crimped contacts ensure high-performance connections that are quick and easy to assemble.

## Standout Features



### WATERTIGHT

- Type 3R/4X
- IP54/IP55/IP66/IP67/IP69/IP69K



### RUGGED

- Silver-Nickel Contacts
- -40°F - 140°F
- IK09 Impact Resistance



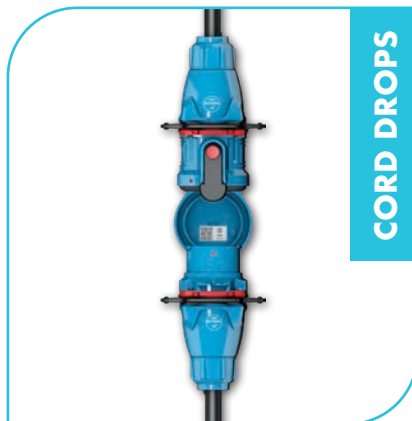
### CONFIGURABLE

- 4 A - 50 A
- 4 - 37 Contacts

## Variety of Mounting Options



MOUNTS



CORD DROPS



SELF-EJECTS

Mounting options are not available for all multipin devices.

## Common Product Accessories

### Handles



Poly Handle    Handle with Cord Grip    Finger Drawplates

### Angles and Boxes



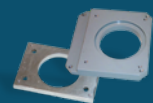
Metal Junction Box    30° Poly Angle    70° Metal Angle

### Pawls



Padlock Pawl

### Adapter Plates



Customized Retrofit

Additional accessories are available to fit your application needs.

# MULTIPIN DEVICES

Control Multiple Circuits & Signals

## DSN



- UL 2238
- Highest IP Ratings
- Highest Contact Count
- Poly and Stainless Steel Construction and Accessories

## DS/DR



- Highest Amperage Rating
- Largest Wiring Capacity
- Up to 3 Aux Contacts
- Full Range of Accessories

## PN



- UL/CSA
- Most Compact
- Up to 7 Contacts
- Flush Mountable
- Smallest Wiring Size
- Reversible Interiors
- Poly, Metal, and Stainless Steel Construction and Accessories

- UL 2238
- Up to 12 Contacts
- Compact Design
- Flush Mountable
- Reversible Interiors
- Poly, Metal, and Stainless Steel Construction and Accessories

## DN



- CSA C22.2 No.182.1
- Metal Construction
- High Amperage Rating
- Horse Power Rated
- Current Interrupting
- Ample Wiring Capacity Range

# PRODUCT Selection Guide

## MELTRIC® MULTIPIN Models & Ratings

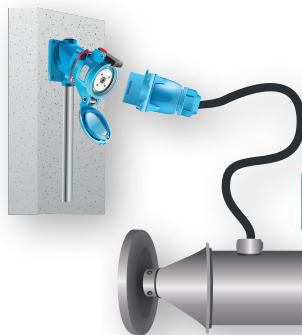
	PN		DSN			DS			DR	DN	
Model	7c	12c	12c	24c	37c	24c	37c	7c	7c	9c	20c
<b>Electrical Ratings (A.C. and D.C.)</b>											
<b>Amperage</b>	15 A	15 A	15 A	10 A	8 A	10 A	8 A	30 A	50 A	20 A	20 A
<b>Max VAC/VDC</b>	480 V/130 V	480 V/480 V	480 V/480 V	480 V/480 V	480 V/480 V	250 V/250 V	480 V/480 V	600 V/130 V	600 V/130 V	480 V/130 V	480 V/130 V
<b>Interruption Capability (A.C. only)</b>											
<b>Interruption Capability</b>	YES	NO	NO	NO	NO	NO	NO	YES	NO	YES	YES
<b>Horsepower (A.C. only)</b>											
<b>120 V 1Ø</b>	-	-	-	-	-	-	-	-	-	0.5 hp	.16 hp
<b>240 V 1Ø</b>	-	-	-	-	-	-	-	-	-	1.5 hp	.5 hp
<b>208 V 3Ø</b>	-	-	-	-	-	-	-	-	-	2 hp	1 hp
<b>240 V 3Ø</b>	-	-	-	-	-	-	-	-	-	3 hp	1 hp
<b>480 V 3Ø</b>	-	-	-	-	-	-	-	-	-	5 hp	3 hp
<b>Casing Materials</b>											
<b>Standard</b>	Poly/Metal/ Stainless Steel	Poly/Metal/ Stainless Steel	Poly	Poly	Poly	Stainless Steel	Stainless Steel	Poly/ Metal	Poly/ Metal	Metal	Metal
<b>Environmental Ratings</b>											
<b>Type</b>	-	4X*	4X	4X	4X	3R	3R	-	-	-	-
<b>IP</b>	66/67*	66/67*	66/67/ 69/69K	66/67/ 69/69K	66/67/ 69/69K	54/55	54/55	66/67/ 69/69K	66/67/ 69/69K	54/55	54/55
<b>Temp. Min/Max</b>	-40°F/140°F										
* Does not apply to stainless steel version											
<b>Maximum Number of Contacts</b>											
<b>Main</b>	6P+G	11P+G	11P+G	23P+G	36P+G	23P+G	36P+G	6P+G	6P+G	8P+G	19P+G
<b>Auxiliary</b>	-	-	-	-	-	-	-	3	3	-	-
<b>Terminal Type</b>	Screw	Solder/ Crimp	Solder/ Crimp	Solder/ Crimp	Solder/ Crimp	Solder/ Crimp	Solder/ Crimp	Screw	Screw	Screw	Screw
<b>Wiring Terminal Capacities - AWG THHN</b>											
<b>Phase - Max</b>	10	14	14	14	14	14	14	8	8	10	10
<b>Phase - Min</b>	18	18	18	18	18	18	18	14	14	16	16



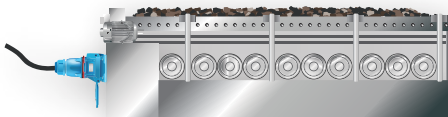
# INDUSTRY & EQUIPMENT Solutions



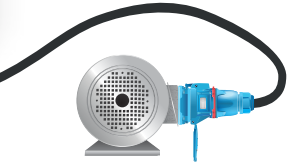
**Pumps**



**Blenders/Mixers**



**Conveyors**



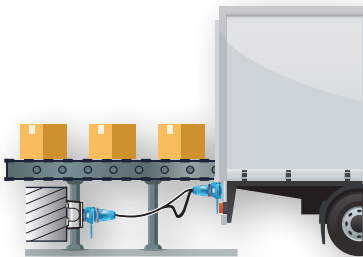
**Motors**

**Connect  
Monitor  
Control**

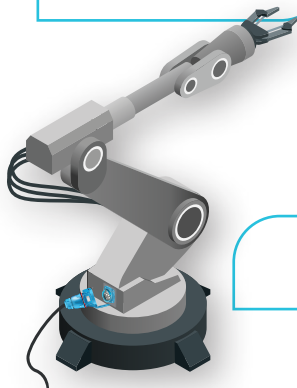
Multipin devices are rugged and capable. They are the perfect solution for a variety of industries and applications. Plug into Blue and experience the superior safety, enhanced durability, and user-friendly design that MELTRIC electrical connections provide.



**HVAC**



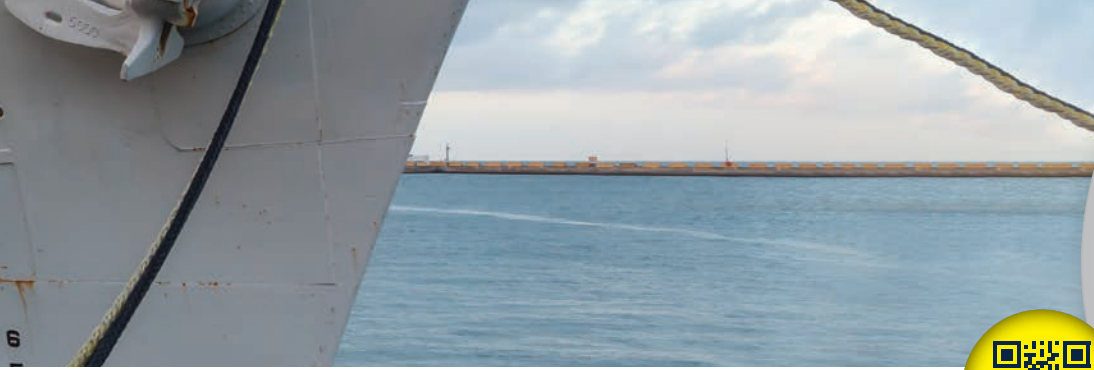
**Trailers**



**Robots**



**VFDs**



**MULTIPIN  
WEB PAGE >>**



**MELTRIC  
13 months  
out of box**



**Competitor  
13 months  
out of box**

## **Application Spotlight – Extremely Weather Resistant Telecom Shore Ties**

### **Successful: Cost and Time Efficient**

MELTRIC Multipin plugs and receptacles were rigorously tested over a 13-month period against commonly used market products in the challenging environment of the Western Pacific Ocean. These devices served as shore tie connections, providing data and telephone services for moored cutters. The study revealed that MELTRIC Multipin devices significantly outperformed competitors in terms of durability, capacity, success rate, cost reduction, and time efficiency.

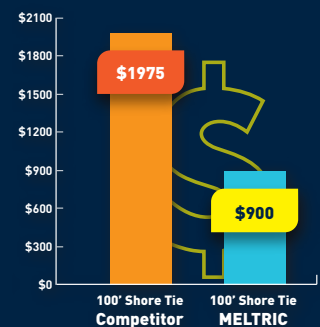
### **Durable: Zero Percent Failure**

During the 13-month test period, MELTRIC connections endured 110 inches of annual rainfall, 90°F average temperatures, and 85-95% humidity. Despite these extreme conditions, MELTRIC devices demonstrated exceptional resistance to failure, chemicals, and UV rays. Notably, they prevented saltwater intrusion, resulting in a zero percent failure rate. In contrast, competitive connectors typically failed after just eight months.

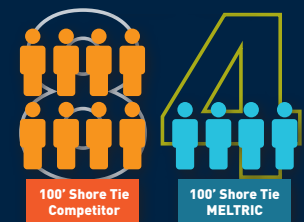
### **MELTRIC: The Competitive Edge**

MELTRIC devices' extreme durability and extended lifespan—double that of competitors—led to significant cost and labor savings. These devices reduced the need for frequent wiring, replacement, and implementation of shore ties by half. Moreover, a **2:1 ratio of competitive devices to MELTRIC devices was required to connect the same number of conductors**, highlighting the ease of use and efficiency throughout the device's lifecycle.

### **COST COMPARISON**



### **MAN HOUR COMPARISON**



**50% TOTAL REDUCTION**

*Adjusted for inflation, 2008-2024, rounded to the nearest dollar.*

*MELTRIC Multipin plugs and receptacles offer an unparalleled solution for extreme weather-resistant telecom shore ties, delivering unmatched performance, cost savings, and reliability.*

# Electrical Connection Solutions for Your Industrial Applications

Explore the complete line of MELTRIC plugs, receptacles, and accessories providing solutions for a broad range of electrical connection applications.

- Switch-Rated from 20-200 A, 1/2 hp - 100 hp
- Standard Duty up to 400 A
- Hazardous Location devices for Class 1 & 2 Div 2 and Zone 1/21 & 2/22 environments
- High Temperature devices, up to 30 A, 465°F

- High Amperage devices, up to 600 A
- RETTBOX® S Electromagnetic Self-Ejection
- Power Distribution—Rubber Boxes, Panel Assemblies, Custom Configurations, Receptacle/Wall Box Combinations, and more



**Switch-Rated**



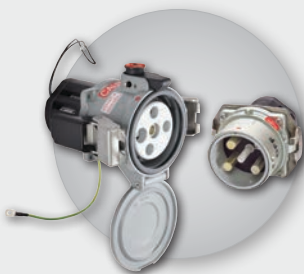
**Standard Duty**



**Hazardous Location**



**High Temp**



**High Amperage**



**RETTBOX® S**



**Power Distribution**

Our friendly engineering and customer service teams are available Monday - Friday, 7 a.m. - 5 p.m. (Central Time)

Phone: 414-433-2700  
Email: [mail@meltric.com](mailto:mail@meltric.com)

MELTRIC excels with the industry's leading delivery times.



Plug into **SAFETY** and **RELIABILITY** with **MELTRIC®**

[meltric.com](http://meltric.com)

4765 W. Oakwood Park Drive • Franklin, WI 53132  
414-433-2700 • [mail@meltric.com](mailto:mail@meltric.com)

©2024 MELTRIC Corporation. All rights reserved. MULTIPIN A

 **MELTRIC**  
A COMPANY OF MARECHAL ELECTRIC