

MELTRIC PRESENTS...

DECONTACTOR™ SERIES SWITCH-RATED WELDING RECEPTACLES



➔ Provide Safety of a Switch

Integral switching mechanism enables safe make and break of inductive loads

➔ Ensure Arc Flash Protection

Workers are never exposed to arcing or live parts

➔ Simplify Compliance to NFPA 70E/CSA Z462

Requirements for working near live parts can be avoided

Decontactors meet code requirements for line of sight disconnect switches



What is the status of your welding receptacles?

NEED TO UPGRADE PIN & SLEEVE



Warning: May expose workers to live parts or arc flash.

Requirement: Ancillary safety switch must be voltage tested to verify deenergization.

EASILY DEFEATED MECHANICAL INTERLOCK



Warning: Interlocks are easily defeated with extension cords. Switch failure can result in exposure to arc flash during plug removal.

Requirement: Safety switch still must be voltage tested to verify deenergization.

ARC FLASH SAFE DECONTACTOR



Integral switch mechanism ensures safe make and break.

Plug is always deenergized before it can be removed.

Arc flash chambers prevent outside exposure to arc flash.

Safety shutter protects from live parts.



The DECONTACTOR™ ADVANTAGES

- ✓ **UL & CSA switch ratings ensure safe load breaking/making – even in overload situations.**

Decontactors are UL Subject 2682 listed as “Switch Rated Plugs & Receptacles” up to 200A & 60 hp. When used on an extension cord the Decontactor is an inline switch.
- ✓ **Dead front construction prevents exposure to live parts and arc flash hazards.**

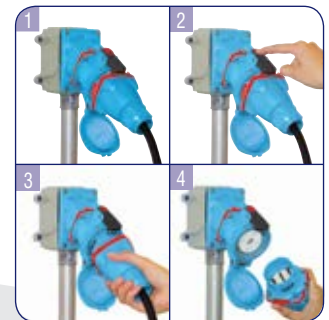
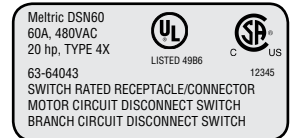
The need for flash protection boundaries and cumbersome PPE is eliminated. NFPA 70E/CSA Z462 compliance is simplified.
- ✓ **Separation of the plug & receptacle provides verification of deenergization.**

Voltage testing is not required. Visible contact separation proves the power is off.
- ✓ **Plug & play simplicity allows any qualified employee to quickly connect and disconnect electrical equipment.**

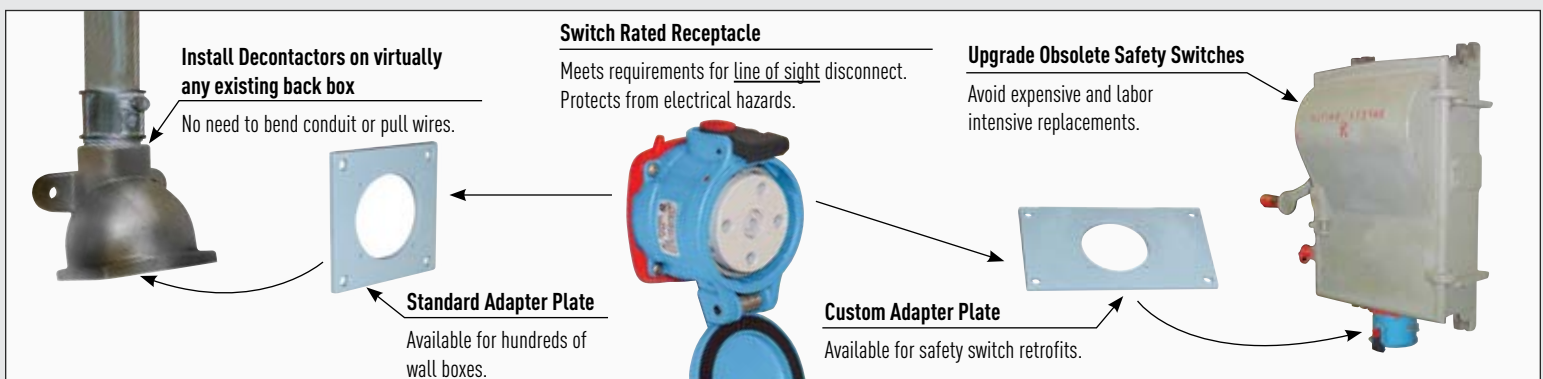
Specially trained electrical workers are not required for load making/breaking. Downtime related to equipment change-outs can be reduced by up to 50%.
- ✓ **Lockout provisions facilitate easy compliance with lockout/tagout requirements.**

Only your lock and tag are needed, no additional mechanisms are required. (Provisions are standard on the plug and optional on the receptacle.)

Typical Device Label



LOW COST RETROFIT SOLUTIONS



©2014 Meltric Corporation. All rights reserved. WELDING D