

New DSN150 Model

new product description



Meltric's switch-rated DSN Series plugs and receptacles are now available with ratings up to:

- 150A
- 75 HP
- 600V
- Type 4X

DSN150 inlets and receptacles can be ordered with:

- Poly or Metal Casings
- Up to 6 Auxiliary Contacts (UL/CSA listed)

Common DSN150 applications include:

- Large motors up to 75 HP
- Generators
- Shore power
- Power distribution

ratings

Horsepower Ratings

120V	1Ø	7 1/2 hp
240V	1Ø	20 hp
208V	3Ø	30 hp
240V	3Ø	30 hp
480V	3Ø	75 hp
600V	3Ø	75 hp

- **Voltage**
600 VAC
- **Switch Rating (AC Only)**
Branch Circuit & Motor Circuit Disconnect Switching
- **Short Circuit Rating**
100kA Close & Withstand with 225A RK1 non-time delay Mersen fuses
10kA Close & Withstand with 400A RK1 non-time delay Mersen fuses
- **Environmental Ratings**
Type 4X, IP66+IP67
- **Temperature Range**
Min -40°F/Max 140°F
- **Wiring Capacity**
Min 4 AWG Max 2/0 AWG; Aux Contacts - Max 14 AWG
- **Listings**
UL, CSA, IEC, CE*

*Contact Customer Service for CE rated devices.

New DSN150 Model

part numbers/pricing

Receptacle (female)



Poly casing opens to 180° but metal casing opens to 90° as standard.

Inlet (male)



Voltage	Polarity	Part # Poly	Part # Metal	Voltage	Polarity	Part # Poly	Part # Metal
120/208V	3P+N+G	63-94167	69-94167	120/208V	3P+N+G	63-98167	69-98167
125V	1P+N+G	63-94075	69-94075	125V	1P+N+G	63-98075	69-98075
125/250V	2P+N+G	63-94076	69-94076	125/250V	2P+N+G	63-98076	69-98076
208V	2P+G	63-94162	69-94162	208V	2P+G	63-98162	69-98162
208V	3P+G	63-94163	69-94163	208V	3P+G	63-98163	69-98163
250V	2P+G	63-94072	69-94072	250V	2P+G	63-98072	69-98072
250V	3P+G	63-94073	69-94073	250V	3P+G	63-98073	69-98073
277V	1P+N+G	63-94045	69-94045	277V	1P+N+G	63-98045	69-98045
277/480V	3P+N+G	63-94047	69-94047	277/480V	3P+N+G	63-98047	69-98047
347/600V	3P+N+G	63-94147	69-94147	347/600V	3P+N+G	63-98147	69-98147
480V	2P+G	63-94042	69-94042	480V	2P+G	63-98042	69-98042
480V	3P+G	63-94043	69-94043	480V	3P+G	63-98043	69-98043
600V	2P+G	63-94142	69-94142	600V	2P+G	63-98142	69-98142
600V	3P+G	63-94143	69-94143	600V	3P+G	63-98143	69-98143

Other voltage configurations are available - contact customer service at 800.433.7642.

Receptacle Options	Suffix #	Inlet Options	Suffix #
With 2 Auxiliary/Pilot Contacts	Recept # - 262	With 2 Auxiliary/Pilot Contacts	Inlet # - 262
With 3 Auxiliary/Pilot Contacts	Recept # - 263	With 3 Auxiliary/Pilot Contacts	Inlet # - 263
With 4 Auxiliary/Pilot Contacts	Recept # - 264	With 4 Auxiliary/Pilot Contacts	Inlet # - 264
With 5 Auxiliary/Pilot Contacts	Recept # - 975	With 5 Auxiliary/Pilot Contacts	Inlet # - 975
With 6 Auxiliary/Pilot Contacts	Recept # - 976	With 6 Auxiliary/Pilot Contacts	Inlet # - 976
Straight Insertion	Recept # - 352	Self-Ejecting Plug Release	Inlet # - 338
Self-Ejecting Connector Release	Recept # - 354	With No Lockout Hole	Inlet # - A155
Mushroom Pawl	Recept # - 375	For Auxiliary Switch*	Inlet # - NNF
Padlock Pawl	Recept # - 843		
Padlockable Mushroom Pawl	Recept # - 375-843		
Locking Mushroom Pawl	Recept # - 845		
Metal Pawl (on poly receptacle)	Recept # - 824		
180° Opening Lid	Recept # - 180 ⁺⁺ⁱ		
Closed Lid Configuration	Recept # - NC		
With Auxiliary Switch	Recept # - 270 ⁺⁺⁺		

Notes: ++ Required when mating to rigid mounted male inlet
+++ Not UL/CSA listed
i Metal devices only

Notes: * Order inlet with P+N+G configuration and receptacle with P+G configuration

New DSN150 Model

part numbers/pricing - accessories

Handles



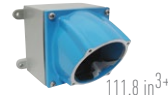
NPT	Poly Handle	Metal Handle	Cable Range	Santoprene™ Handle	Poly Handle w/Clamp & Bushing
3/4"	9PH34	9H34	.70 - 1.00	65-9A013-D25	-
1"	9PH1	9H1	.984 - 1.377	65-9A013-D35	-
1 1/4"	9PH114	9H114	1.250 - 1.375	-	9PM622
1 1/2"	9PH112	9H112	1.377 - 1.771	65-9A013-D45	-
2"	9PH2	9H2	1.438 - 1.562	-	9PM625
			1.562 - 1.688	-	9PM627
			1.688 - 1.812	-	9PM629

Angles



Nylon 30° Angle	Metal 30° Angle	Metal 70° Angle	Metal Angle Oversized 30°	Metal Straight Adapter
MP10	MA10	89-9A027	MA110	MS10

Junction Boxes



NPT	Metal Box	Metal Box with Nylon Angle	Metal Box with Metal Angle
1 1/4"	MB10114	31-9A053-080-114	39-9A053-080-114
1 1/2"	MB10112	31-9A053-080-112	39-9A053-080-112
2"	MB102	31-9A053-080-2	39-9A053-080-2
2 1/2"	MB10212	31-9A053-080-212	39-9A053-080-212

Miscellaneous Accessories



Protective Cap	Padlockable Cap Aluminum
31-9A126	DS9MC

faq

What literature is available that shows the DSN150?

Meltric will provide a small quantity of new DSN150 flyers to each rep office. For additional quantities of DSN150 flyers email marketing@meltric.com. Also, the DSN150 will be included in the 2015 Meltric catalog which will be available by December 2014.