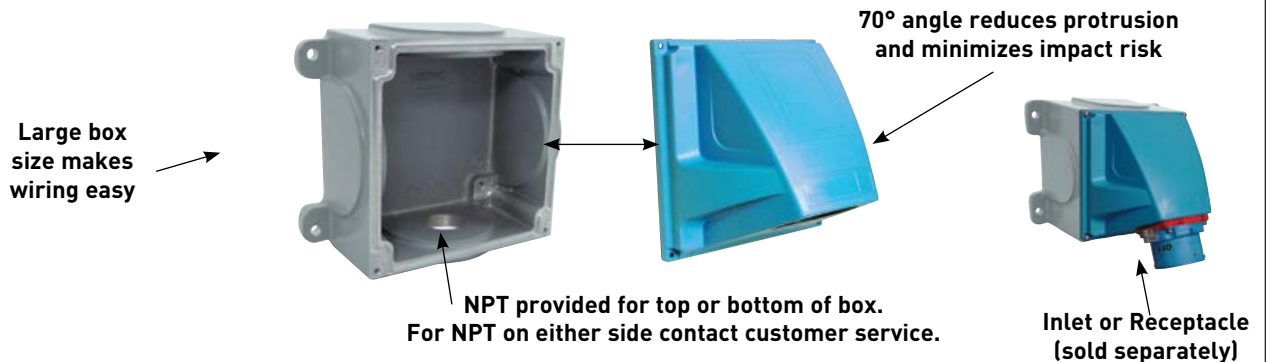


## Aluminum Wall Box/70° Angle Combination

### new product description

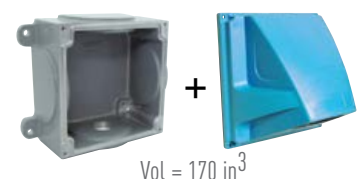
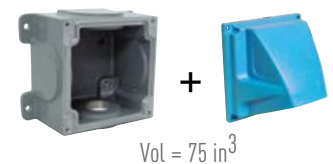
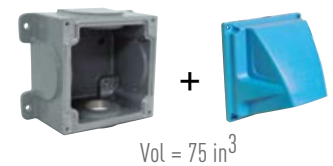
Cast aluminum wall boxes with 70° poly angles are now available for mounting Meltric inlets or receptacles up to the DS100C size. This new aluminum box provides a heavy duty alternative to the plastic box and its threaded conduit entries are better suited for applications using pipe or rigid metal conduit. The 70° angle keeps the receptacle or inlet from protruding out and thus helps avoid impact damage. In addition, the larger size of these wall boxes and angles helps simplify wiring as they provide 2.5 to 6 times the interior volume of an MB box and 30° angle.



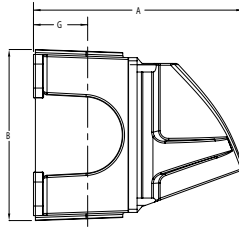
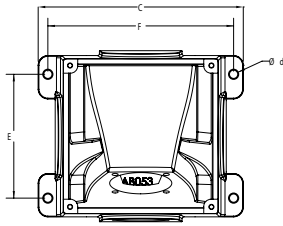
*Note: The wall boxes and angles are a matching set and are not meant to be used separately.*

### how to order

Part Number	Description	Use With
59-AA058-12	Metal 70° Wall Box with 1/2" NPT	DSN20, PN
59-AA058-34	Metal 70° Wall Box with 3/4" NPT	DSN20, PN
59-AA058-1	Metal 70° Wall Box with 1" NPT	DSN20, PN
59-AA058-114	Metal 70° Wall Box with 1-1/4" NPT	DSN20, PN
59-AA058-112	Metal 70° Wall Box with 1-1/2" NPT	DSN20, PN
59-BA058-12	Metal 70° Wall Box with 1/2" NPT	DSN30, DS20, DR30
59-BA058-34	Metal 70° Wall Box with 3/4" NPT	DSN30, DS20, DR30
59-BA058-1	Metal 70° Wall Box with 1" NPT	DSN30, DS20, DR30
59-BA058-114	Metal 70° Wall Box with 1-1/4" NPT	DSN30, DS20, DR30
59-BA058-112	Metal 70° Wall Box with 1-1/2" NPT	DSN30, DS20, DR30
59-CA058-12	Metal 70° Wall Box with 1/2" NPT	DSN60, DS30, DR50
59-CA058-34	Metal 70° Wall Box with 3/4" NPT	DSN60, DS30, DR50
59-CA058-1	Metal 70° Wall Box with 1" NPT	DSN60, DS30, DR50
59-CA058-114	Metal 70° Wall Box with 1-1/4" NPT	DSN60, DS30, DR50
59-CA058-112	Metal 70° Wall Box with 1-1/2" NPT	DSN60, DS30, DR50
59-DA058-12	Metal 70° Wall Box with 1/2" NPT	DS60, DS100C, DR100
59-DA058-34	Metal 70° Wall Box with 3/4" NPT	DS60, DS100C, DR100
59-DA058-1	Metal 70° Wall Box with 1" NPT	DS60, DS100C, DR100
59-DA058-114	Metal 70° Wall Box with 1-1/4" NPT	DS60, DS100C, DR100
59-DA058-112	Metal 70° Wall Box with 1-1/2" NPT	DS60, DS100C, DR100



## dimensions



PRODUCT	A	B	C	Ød	E	F	G
59-AA058	6.71"	5.53"	6.63"	.27"	4.00"	6.00"	1.75"
59-BA058	6.71"	5.53"	6.63"	.27"	4.00"	6.00"	1.75"
59-CA058	7.73"	7.29"	8.90"	.33"	5.50"	8.00"	1.75"
59-DA058	7.73"	7.29"	8.90"	.33"	5.50"	8.00"	1.75"

## faq

### Are the new Aluminum 70° Wall Boxes in the catalog?

No, they are not in the catalog but they will be included in the next revision scheduled to be released in late 2014.

### Are the new Aluminum 70° Wall Boxes in the current price list?

No, the Aluminum 70° Wall Boxes did not make it in the 2014 price list. They will be included in the 2015 price list.

### How much do the new Aluminum 70° Wall Boxes weigh?

Approximate weights are as follows:

Part	Weight
59-AA058-XX	5.5 lbs
59-BA058-XX	5.5 lbs
59-CA058-XX	8.0 lbs
59-DA058-XX	8.0 lbs