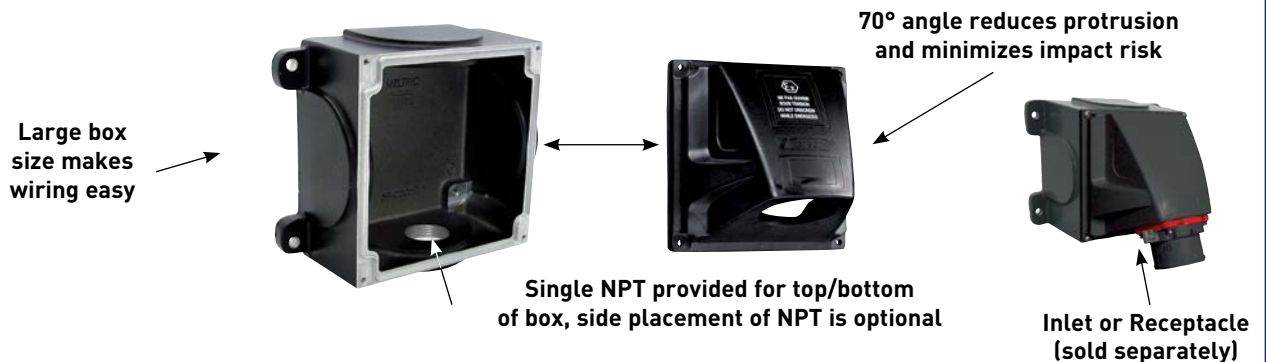


Aluminum Wall Box/70° Angle Combination

new product description

Cast aluminum DXN wall boxes with 70° poly angles are now available for mounting Meltric hazardous location rated inlets or receptacles up to the DXN60 size. This new aluminum box provides a heavy duty alternative to the plastic box and its threaded conduit entries are better suited for applications using pipe or rigid metal conduit. The 70° angle keeps the receptacle or inlet from protruding out and thus helps avoid impact damage. In addition, the larger size of these wall boxes and angles helps simplify wiring as they provide 2.5 to 6 times the interior volume of an MB box and 30° angle.



Note: The wall boxes and angles are a matching set and are not meant to be used separately.

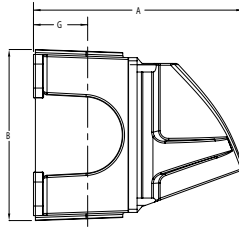
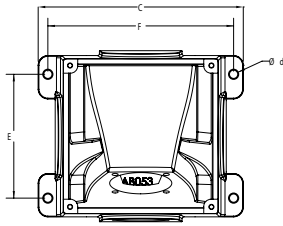
how to order

Part Number	Description	Use With
22-1A058-12	Metal 70° Wall Box with 1/2" NPT	DXN20
22-1A058-34	Metal 70° Wall Box with 3/4" NPT	DXN20
22-1A058-1	Metal 70° Wall Box with 1" NPT	DXN20
22-1A058-114	Metal 70° Wall Box with 1-1/4" NPT	DXN20
22-1A058-112	Metal 70° Wall Box with 1-1/2" NPT	DXN20
22-3A058-12	Metal 70° Wall Box with 1/2" NPT	DXN30
22-3A058-34	Metal 70° Wall Box with 3/4" NPT	DXN30
22-3A058-1	Metal 70° Wall Box with 1" NPT	DXN30
22-3A058-114	Metal 70° Wall Box with 1-1/4" NPT	DXN30
22-3A058-112	Metal 70° Wall Box with 1-1/2" NPT	DXN30
22-6A058-12	Metal 70° Wall Box with 1/2" NPT	DXN60
22-6A058-34	Metal 70° Wall Box with 3/4" NPT	DXN60
22-6A058-1	Metal 70° Wall Box with 1" NPT	DXN60
22-6A058-114	Metal 70° Wall Box with 1-1/4" NPT	DXN60
22-6A058-112	Metal 70° Wall Box with 1-1/2" NPT	DXN60



Note: NPT is drilled for top/bottom as standard. For NPT on side only, add -L. To switch from top to bottom or left to right the box can be rotated 180°. List price with the -L is the same.

dimensions



PRODUCT	A	B	C	Ød	E	F	G
22-1A058-XX	6.71"	5.53"	6.63"	.27"	4.00"	6.00"	1.75"
22-3A058-XX	6.71"	5.53"	6.63"	.27"	4.00"	6.00"	1.75"
22-6A058-XX	7.73"	7.29"	8.90"	.33"	5.50"	8.00"	1.75"

faq

Are the new Aluminum 70° Wall Boxes in the catalog?

No, they are not in the catalog but they will be included in the next revision scheduled to be released in late 2014.

Are the new Aluminum 70° Wall Boxes in the current price list?

No, the Aluminum 70° Wall Boxes did not make it in the 2014 price list. They will be included in the 2015 price list.

How much do the new Aluminum 70° Wall Boxes weigh?

Approximate weights are as follows:

Part	Weight
22-1A058-XX	5.5 lbs
22-3A058-XX	5.5 lbs
22-6A058-XX	8.0 lbs