



DR400

High Amperage Plugs and Receptacles with Exclusive Safety and Performance Features

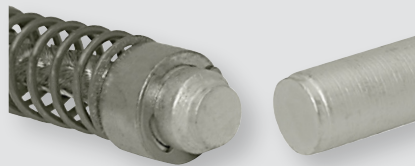
Ideal for:

- Generator Connections
- Power Distribution
- Conveyor Systems
- Shore Power
- Aviation
- Mining



Maximum Safety

- ▶ **Safety shutter** isolates live parts. Only correct plug mating can open the shutter.
- ▶ **Integral provision** makes lockout/tagout easy.



Superior Performance

- ▶ **Solid silver-nickel, spring-loaded butt-style contacts** maintain optimal contact pressure and superior conductivity even in dirty, corrosive environments.



Easy Operation

- ▶ **Easy closing mechanism** effortlessly mates the plug to the receptacle.
- ▶ **Rated watertightness** is achieved when plug and receptacle are fully mated.

DR400

Standard Duty – 400 A Plugs and Receptacles

Ratings

<ul style="list-style-type: none"> Amperage 400 A Max to 480 VAC 350 A Max to 600 VAC Current Interruption Capability Not for current interrupting Voltage 600 VAC Environmental Ratings IP54/IP55* (IP66/IP67 optional) 	<ul style="list-style-type: none"> Temperature Range Min -40°F/Max 140°F Wiring Capacity Min 2 AWG Max 500 MCM* Aux Contacts – 14 AWG (prewired) Listings UL 1682 CSA 182.1
--	---

* See catalog for more details

Receptacle (female)



Standard DR400 lid opens to 90°

Voltage	Polarity	Part #
208V	3P+G+2PIL	39-44163-172
250V	3P+G+2PIL	39-44073-172
480V	3P+G+2PIL	39-44043-172
600V	3P+G+2PIL	39-44143-172*

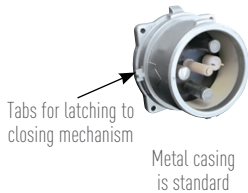
* 350 A only for 600V models.

Receptacle Options

Receptacle Options	Part #
IP66/IP67	Recept # - 4X
Closed Lid Configuration	Recept # - NC

Note: Two pilot/auxiliary contacts are provided in each receptacle.

Inlet (male)



Voltage	Polarity	Part #
208V	3P+G+2PIL	39-48163-172
250V	3P+G+2PIL	39-48073-172
480V	3P+G+2PIL	39-48043-172
600V	3P+G+2PIL	39-48143-172*

* 350 A only for 600V models.

Inlet Options

Inlet Options	Part #
IP66/IP67	Inlet # - 4X
With No Lockout Hole	Inlet # - A155

Note: Two pilot/auxiliary contacts are provided in each inlet.

Installation Accessories - Size 7

HANDLES

LARGE HANDLE w/NPT	Part #
2"	5T7P0N20
2 1/2"	5T7P0N25
3"	5T7P0N30

LARGE HANDLE w/CORD GRIP	Cable Range	Part #
	2.062 - 2.188"	5T7P0JT1
	2.188 - 2.312"	5T7P0JT2
	2.312 - 2.438"	5T7P0JT3
	2.437 - 2.625"	5T7P0KT1
	2.625 - 2.812"	5T7P0KT2

STRAIGHT HANDLE w/BUSHING w/Cable Range	Part #	
	2.09 - 2.25"	5T7P0D57
	2.25 - 2.44"	5T7P0D62
	2.44 - 2.67"	5T7P0D68
	2.67 - 2.87"	5T7P0D73

ANGLES

METAL ANGLE	Part #
	0° 5T7M0

	Extended 60° 5T7M6
	Extended 60° with 68 mm spacer. 5T7M6-68

Provides space for Cable Reducing Adapters.

BOXES

BOX ANGLE w/ METAL BOX w/NPT	Part #
	0° 2" 7T7F0N20
	0° 2 1/2" 7T7F0N25
	0° 3" 7T7F0N30
	0° 3 1/2" 7T7F0N35
	0° 4" 7T7F0N40

MISCELLANEOUS ACCESSORIES

PROTECTIVE CAP	Part #	Description
	39-2A426	For Male Devices Only.

CABLE REDUCING ADAPTERS	Part #	Description
	PT535FX350-3	Reducer for 500 MCM Fine Stranded or Flexible Wire.
	PT500R350-3	Reducer for 500 MCM Coarse Stranded or Building Wire.

	PT400R350-3	Reducer for 400 MCM Wire.
--	-------------	---------------------------

SPACER	Part #	Description
	5T7M0-68	68mm (2.68") spacer is used (included) with metal 60° angle.
	5T7M0-115	115mm can be used when mounting to a panel - though the metal straight adapter is preferred.

meltric.com

4765 W OakwoodPark Drive • Franklin, WI 53132
800-433-7642 • Fax 414-433-2701

MELTRIC
A COMPANY OF MARECHAL ELECTRIC

©2019 MELTRIC Corporation. All rights reserved. DR400_E