



# ACCESSORIES & OPTIONS

PILOT CONTACTS .....	P. 231
PAWL OPTIONS.....	P. 232
SELF-EJECTING DEVICES .....	P. 233
LID CONFIGURATIONS .....	P. 235
MICROSWITCH .....	P. 236
ADDITIONAL WATERTIGHTNESS .....	P. 236
HANDLES .....	P. 237
PLUG CAPS .....	P. 239
ADAPTER PLATES .....	P. 240

# AUXILIARY/PILOT CONTACTS

Auxiliary/Pilot contacts can operate secondary circuits on the inlet or receptacle side of the circuit. They make last and break first when the plug is engaged or disengaged from the receptacle. To order a device with auxiliary/pilot contacts, add the appropriate suffix numbers listed below. Amperage ratings for the auxiliary/pilot contacts depend on the device size and operating voltage (see table below).

Switch-rated plugs and receptacles with auxiliary/pilot contacts can make the operation of a facility safer and more efficient by facilitating the use of advanced control schemes. They allow facilities to:

- **Quickly reconfigure or change-out processing equipment.** The need for hardwiring or multiple plug connections is eliminated.
- **Reduce equipment costs.** The need for separate connections for the pilot contacts is eliminated.
- **Simplify the monitoring of key parameters.** Thermistors on a motor driving a critical process pump can communicate temperature problems via pilot contacts in the DECONTACTOR™.
- **Communicate alarm signals or turn off equipment.** When a motor is disconnected or unplugged, the pilot contacts can convey a signal that will de-energize the motor starter.



Auxiliary/Pilot Contacts

## Auxiliary Contact Amperage Ratings

Product	DSN20	DSN30 DSN60	DSN150	DS20 DS30 DS60 2 AUX DSN100 2 AUX	DS100 DS200	DS60 3+4 AUX DSN100 3+4 AUX	DXN30 DXN60	PFQ300	PF (ALL SIZES)	DR30 DR50 DR100 2 AUX	DR150 DR225 DR250 DR400	DR100 3+4 AUX	SP	SPEX	DS7c	DR7c
120 VAC	0.60 A	6 A	1.50 A	6 A	1.50 A	3 A	5 A*	7 A	10 A*	6 A	1.50 A	3 A	0.60 A**	-	-	-
240 VAC	0.30 A	3 A	0.75 A	3 A	0.75 A	1.50 A	5 A*	5 A	10 A*	3 A	0.75 A	1.50 A	1 A	6 A* (220V max)	-	5 A*
480 VAC	-	1.50 A	0.38 A	1.50 A	0.38 A	0.75 A	5 A	2 A*	10 A*	1.50 A	0.38 A	0.75 A	-	-	5 A* (400V max)	-
600 VAC	-	1.20 A	0.30 A	1.20 A	0.30 A	0.60 A	5 A* (550V max)	2 A*	10 A*	1.20 A	0.30 A	0.60 A	-	-	-	-

\* Rating is not UL or CSA listed \*\*Rating is not UL listed.

## Ordering Information

To order on a device, add the appropriate suffix to both the inlet and receptacle part numbers.

PRODUCT	DSN					DS					DXN		PFQ	PF				DR					DR7c DS7c	SP
	20*	30	60	100	150	20	30	60	100	200	30	60	300	300	400	600	30	50	100	150	250			
2 contacts	-972	-972	-972	-972	-262	-972	-972	-972	-262	-972	-972	-972	-	-	-	-	-972	-972	-972	-262	-972	-172	Standard 2	
3 contacts	-	-	-973	-263	-263	-	-973	-263	-263	-	-	-	-	-	-	-	-	-973	-263	-263	-	-173	-	
4 contacts	-	-	-974	-264	-264	-	-974	-264	-264	-174	-	-	Standard 8	Standard 4	Standard 4	Standard 4	-	-974	-264	-264	-174	-	-	
5 contacts	-	-	-	-	-975	-	-	-	-975	-	-	-	-	-	-	-	-	-	-	-975	-	-	-	
6 contacts	-	-	-	-	-976	-	-	-	-976	-976	-	-	-	-	-	-	-	-	-	-976	-976	-	-	

\* Suffix on receptacle only.

# PAWL OPTIONS

## Mushroom Pawl

The mushroom pawl is available as an alternative to the standard pawl. It is ideal for a quick disconnection of motors and other equipment, or in areas where employees use gloves and it is difficult to operate the standard pawls. The button has a red "stop" label for easy recognition.

Example:  
To order on a receptacle add suffix **-375** to the receptacle part number.

DSN20 poly receptacle 3P+G=63-14073-375



Available on:

DSN, DS, DR and DN devices only

## Screw-Type Locking Pawl

Screw-type locking pawls are available and include a screw which can be tightened to "lock" the pawl in place, preventing release of the plug or the lid.

Example:  
To order on a receptacle add suffix **-845** to the receptacle part number.

DS30 poly receptacle 3P+G =33-34163-845



Available on:

DSN, DS, DR and DN devices only

## Padlock Pawl

Standard pawls and mushroom pawls can be provided with a .32" hole that allows the lid of the receptacle to be locked closed or alternatively the plug can be locked in the connected position. Lockout Pin sold separately

Example:  
To order on a receptacle add suffix **-843** to the receptacle part number.

DSN20 poly receptacle 3P+G = 63-14073-843



Optional pin sold separately.

Available on:

DSN, DS, DR, DXN and DN devices only

Notes: A 5/16" diameter lock or lockout pin is needed for proper operation. Do not substitute a smaller diameter lock/pin.

## Metal Pawl

Metal pawls are standard with metal receptacles only. If you prefer a metal pawl on a poly receptacle, add suffix **-824** to the poly receptacle part number.

Example:  
DS60 poly receptacle 3P+G=33-64163-824



Available on:

DSN, DS, DR and DXN devices only

# SELF-EJECTING DEVICES

## General

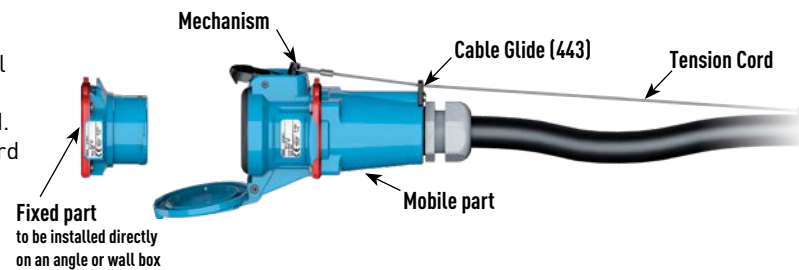
Self-ejecting devices protect equipment from damage caused when mobile equipment is accidentally moved without disconnecting power. Self-ejecting systems are designed to automatically release the plug or connector when tension is detected by a tension cord attached between the pawl and the power cable.

## Applications

Self-ejecting devices are commonly used on truck hook-ups, cranes, railroad cars, refrigerated food carts, delivery vehicles and other portable equipment.

## Self-Ejecting Female Connector

For self-ejecting female connectors, the standard pawl on the connector is replaced by a "shark's fin" pawl that is attached to the power cable via a tension cord. If the connected equipment is moved, the tension cord lifts the shark's fin pawl and the connector is released before damage can occur.



### Available on:

DSN (All sizes)  
DS (All sizes, except DS200)  
DN9c\*, DN20c\*, DS7c

### How To Order:

To the female receptacle, add suffix **-354**  
To the handle part number, add suffix **443**.  
Note the poly handle with NPT and poly handle with cord grip for Size 2 devices includes an integrated cable guide and a 443 suffix is not required.

### Example:

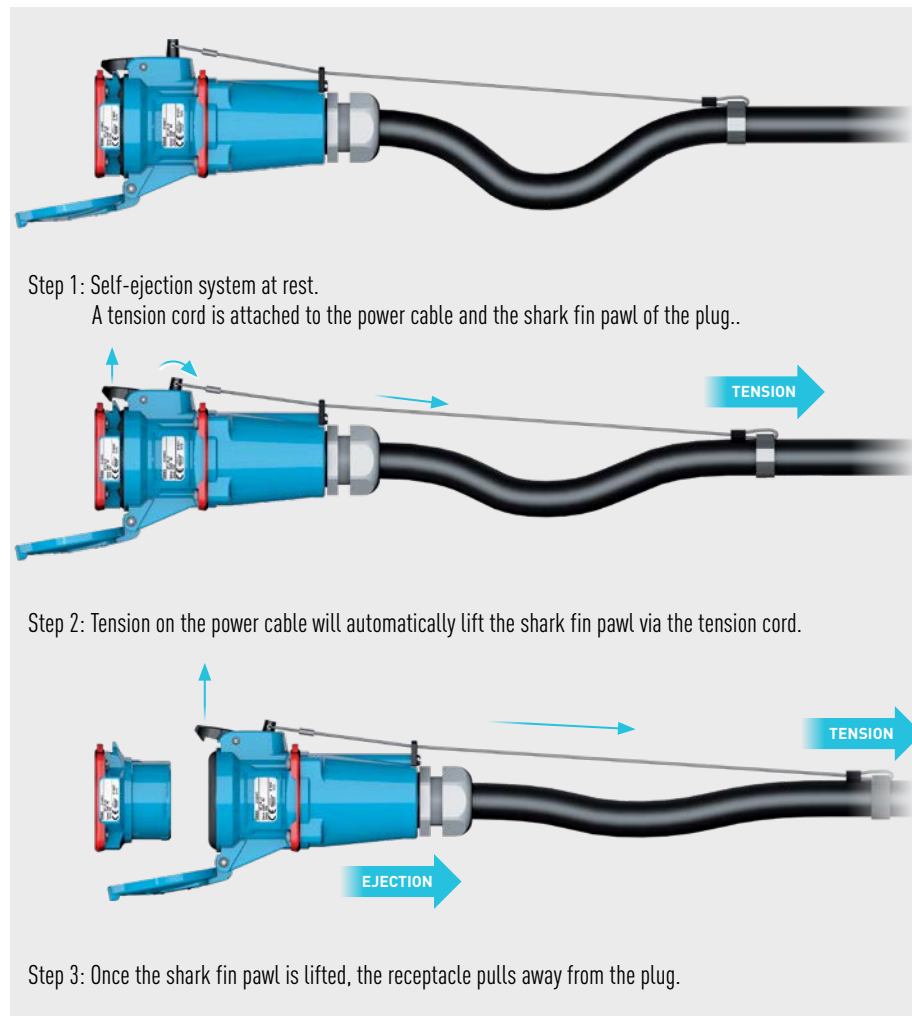
To order a DSN30 self-ejecting receptacle and poly handle (3/4"), the part numbers would be:  
Receptacle: 63-34043-354  
Handle: 513PON07

### Example:

To order a DSN60 self-ejecting receptacle and poly handle (3/4"), the part numbers would be:  
Receptacle: 63-64043-354  
Handle: 513PON07443

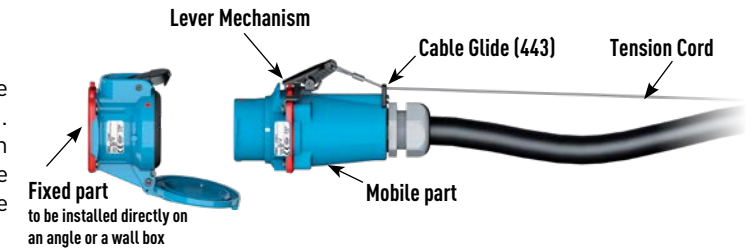
\* For DN9c and DN20c ordering, use suffixes listed in DN9c and DN20c section

**Notes:** Self-ejecting devices are modified to allow straight insertion. This defeats the safety shutter and voids the device's switch-rating.



## Self-Ejecting Plug

For self-ejecting plugs, a lever mechanism is added to the assembly and attached to the power cable via a tension cord. When tension is applied to the power cable, the tension cord engages the lever mechanism, which in turn lifts the standard pawl on the receptacle and releases the plug before damage can occur.



### Available on:

DSN20, DSN30, DSN60, DS20, DS30, DS60, DS7c

### How To Order:

To the male inlet, add suffix **-338**  
To the female receptacle, add suffix **-352**  
To the handle part number, add suffix **443**  
Note the poly handle with NPT and poly handle with cord grip for Size 2 devices includes an integrated cable guide and a 443 suffix is not required.

### Example:

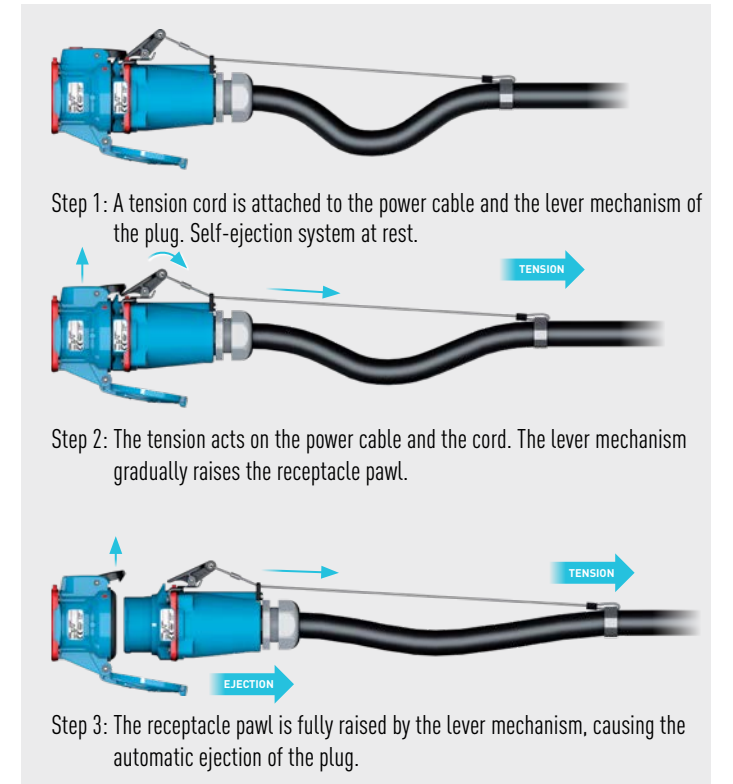
To order a DSN30 self-ejecting plug, receptacle and poly handle (3/4"), the part numbers would be:

Inlet: 63-38043-338  
Receptacle (straight Insertion): 63-34043-352  
Handle: 512PON07

To order a DSN60 self-ejecting plug, receptacle and poly handle (3/4"), the part numbers would be:

Inlet: 63-68043-338  
Receptacle (straight Insertion): 63-64043-352  
Handle: 513PON07443

**Notes:** Self-ejecting devices are modified to allow straight insertion. This defeats the safety shutter and voids the device's switch-rating.



## Self-Ejecting Plug (DS100, DSN150, DS200, DN20c only)

For self-ejecting plugs on DS100, DSN150, DS200 and DN20c models, a cam mechanism is used in lieu of the 'lever mechanism.' The principle of operation remains the same.

### How To Order:\*

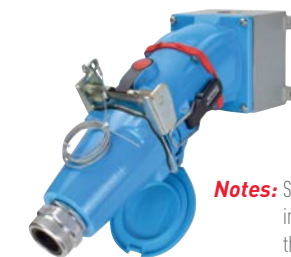
To the male inlet, add suffix **-338**  
To the female receptacle, add suffix **-352**  
To the handle part number, add suffix **443**

### Example:

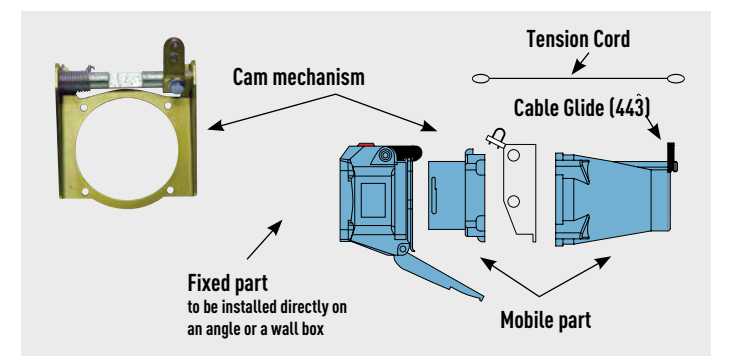
To order a poly DS100 self-ejecting plug, receptacle and poly handle (3/4"), the part numbers would be:

Inlet: 33-98043-338  
Receptacle (straight Insertion): 33-94043-352  
Handle: 515PON07443

\* For DS200 ordering, use suffixes listed in DS200 section  
\* For DN20c ordering, use suffixes listed in DN20c section



**Notes:** Self-ejecting devices are modified to allow straight insertion. This defeats the safety shutter and voids the device's switch-rating.



# LID CONFIGURATIONS

There are four standard open lid configurations depending on the model and size of the device: 180° open, 120° open, 90° open and detached. Optionally, customers can order lids that are Self-Returning, or if the lid opens to 120° as standard, it can be ordered to open 180° for flush mounted inlets (DS & DR only).

## Standard Lid Configurations



180° OPENING LIDS

### Standard for:

- DSN20, DSN30, DSN60, DSN100, DSN150
- DS20, DS30, DS60, DS100, DS200
- DR30, DR50, DR100, DR150, DR250, DR400
- DSDC1, DSDC3, DSDC6, DSDC9, DSDC2
- DS7c, DR7c
- DSN12c, DSN24c, DSN37c
- DXN20, DXN30, DXN60
- DX1, DX3, DX6, DX9



120° OPENING LIDS

### Standard for:

- PN
- DN9c, DN20c
- PXN12c

**Notes:** DSN, DS, DR, and DSDC Hazardous receptacles have standard lid configurations that are the same as their industrial ordinary location equivalents, except they are normally closed.



DETACHED LIDS

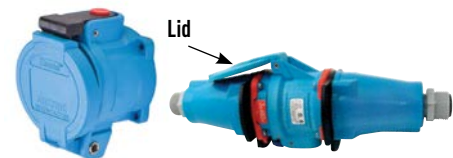
### Standard for:

- PN stainless steel
- DS24c stainless steel
- DS37c stainless steel
- PFQ300, PF300, PF400, PF600
- SP, SPeX
- CS1000
- DXA1
- DXN25c, DXN37c

## Optional Lid Configurations

### Self-Returning Lid (Receptacles only)

A Self-Returning lid is available for applications where it is desirable to protect the receptacle face from dust, debris, or potential damage. This option provides a lid that will automatically close to a pre-latch position after removal of the plug. The lid **must still be latched manually** in order to achieve rated watertightness.



A Self-Returning lid is recommended for cord to cord applications to keep the lid tucked in and avoid damage.

**Examples:**  
To order a DSN, DS, DR, or DN device with a Self-Returning lid add **-NC** to the receptacle part number.

### Available as option on:

- DSN (All sizes)
- DS (All sizes)
- DR (All sizes)
- DN (All sizes)

DS20 Poly receptacle 2P+G = 33-14162-NC

To order a DXN device with a Self-Returning lid add **-R** to the receptacle part number.

DXN20 receptacle 3P+G = 22-14043-R

### 180° Open Lid for Flush Mounted Inlets (DS and DR devices only)

When ordering an inlet that will be mounted directly flush against a wall or surface without an angle or box, the connector (receptacle + handle) may require the lid to be set for 180° opening.



### Available as option on:

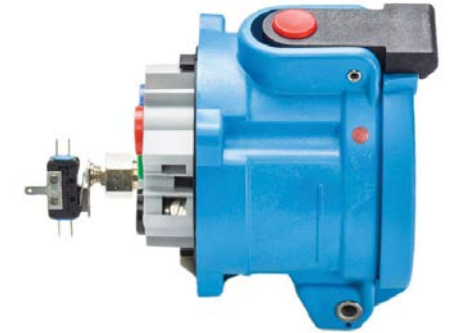
- DN20c

**Example:**  
To order this configuration add suffix **-180** to the receptacle part number.

DN20c Receptacle 10P+G = 17-64101-180

# MICROSWITCH

Female receptacles/connectors with up to 3 poles/4 wires are available with an optional microswitch for operating secondary circuits on the line side of the circuit. The microswitch is rated at 5 A and includes one set of normally open (NO) and one set of normally closed (NC) contacts. With the three phase devices the neutral contact of the plug operates the switch which is located in the neutral contact position in the receptacle. With the single phase units the third phase contact on the plug operates the switch which is located in the third phase contact position in the receptacle.



### Examples:

Order a device with an auxiliary switch by adding suffix **-270** to the receptacle or inlet part number.

DSN30 Poly Receptacle 3P+G = 63-34043-270

DSN30 Poly Inlet 3P+G=63-38043-270

**Notes:** Devices ordered with auxiliary switch option are not UL/CSA listed.

# ADDITIONAL WATERTIGHTNESS

Additional water protection is available for DS or DR models that offer only Type 3R protection as standard. The following Type 4X option may be ordered for these DS or DR models.

## Type 4X Watertightness

Type 4X waterproofing is used for applications where connectors, plugs, and receptacles are subjected to water pressure. A gasket is added to the inlet and the receptacle lid is made to self-return and be manually closed.

### Example:

To order on a device add suffix **-4X** to the inlet and receptacle part number.

DS20 Poly Inlet 2P + E = 33-18162-4X



# POLY HANDLES

MELTRIC provides a diverse selection of handle options designed to meet a broad range of applications and requirements. All handles offer ample wiring space. The below descriptions highlight the key benefits for each handle type. For more detailed information or specific use cases, please Contact Engineering or your sales representative.

## POLY HANDLE



- Lightweight
- Integrated bushing
- Multiple bushings included to accommodate various cable sizes

### Available for:

DSN: Size 1, 2, 3, 4	DR: Size 2, 3, 4	DS Zone 2: Size 2, 3
DS: Size 2, 3, 4	PN: Size 1	DR Zone 2: Size 2, 3
Multipin: Size 1, 2, 3, 4	DSDC: Size 2, 3, 4	DSDC Zone 2: Size 2, 3, 4

## POLY HANDLE WITH CORD GRIP



- Lightweight
- Cord grip included
- Provides strain relief

### Available for:

DSN: Size 1, 2, 3, 4, 5	Multipin: Size 1, 2, 3, 4, 5	PN: Size 1
DS: Size 2, 3, 4, 5, 6	DR: Size 2, 3, 4, 5, 6	DXN: Size 1, 2, 3

## POLY HANDLE WITH NPT



- Lightweight
- Add cord grip for strain relief and added ingress protection (p159-160)
- Allows for the use of a variety of industry standard NPT fittings

### Available for:

DSN: Size 1, 2, 3, 4, 5	PN: Size 1	DS Zone 2: Size 2, 3, 4
DS: Size 2, 3, 4, 5, 6	DSDC: Size 2, 3, 4, 5, 6	DR Zone 2: Size 2, 3
Multipin: Size 1, 2, 3, 4, 5	DSP: Size 4	DSDC Zone 2: Size 2, 3, 4
DR: Size 2, 3, 4, 5, 6	DXN: Size 1, 2, 3	

## POLY EXTENDED HANDLE



- Integrated bushing
- Lightweight, space for extra wiring
- Multiple bushings included to accommodate various cable sizes

### Available for:

DSN: Size 1	Multipin: Size 1
-------------	------------------

## POLY 90° WITH NPT



- Lightweight
- Allows for the use of a variety of industry standard NPT fittings

### Available for:

PN7c: Size 1	PN20: Size 1
--------------	--------------

## POLY ANGLED HANDLE



- Lightweight, compact, ideal for confined spaces
- Integrated bushing
- Multiple bushings included to accommodate various cable sizes

### Available for:

DSN: Size 1	Multipin: Size 1	PN: Size 1
-------------	------------------	------------

## POLY HANDLE WITH CLAMP & BUSHING



- Lightweight
- Integrated bushing
- Dedicated strain relief

### Available for:

DSN: Size 2, 3	Multipin: Size 2, 3
DS: Size 2, 3	DR: Size 2, 3

## POLY HANDLE WITH BUILT-IN DRAWPLATES



- Lightweight
- Ideal for cord-to-cord applications
- Multiple bushings included to accommodate various cable sizes

### Available for:

DSN: Size 2, 3	Multipin: Size 2, 3
DS: Size 2, 3	DR: Size 2, 3

## SANTOPRENE HANDLE



- Lightweight
- Integrated bushing
- Longer for extra wiring space
- Dedicated strain relief

### Available for:

DSN: Size 4, 5	Multipin: Size 4, 5	DSN Zone 2: Size 5
DS: Size 4, 5, 6	DR: Size 4, 5, 6	DS Zone 2: Size 6
		DR Zone 2: Size 6

# METAL HANDLES

## OVERSIZED METAL HANDLE WITH NPT



- Versatile cord grip options (pg 159-160)
- Easy handling for large cable
- Ergonomic dual grips
- Allows for the use of a variety of industry standard NPT fittings

### Available for:

DSN: Size 5	DR: Size 5, 6, 7
DS: Size 5, 6	DSN Zone 2: Size 5

## METAL HANDLE WITH CORD GRIP



- Cord grip included
- Provides strain relief

### Available for:

DSN: Size 1, 2, 3, 4, 5	Multipin: Size 1, 2, 3, 4, 5	PN: Size 1
DS: Size 2, 3, 4, 5, 6	DR: Size 2, 3, 4, 5, 6	

## STRAIGHT HANDLE (BOLT-ON OR NPT)



- Ergonomic dual grips
- Bump-outs provide drop resistance
- Bolt-on: Longer for extra wiring space, integrated bushing
- NPT: Allows for the use of a variety of industry NPT fittings; versatile cord grip options (pg 159-160)

### Available for:

DS: Size 6	DR: Size 6, 7
------------	---------------

## METAL STRAIGHT HANDLE



- Ergonomic dual grips
- Bolt-on: Longer for extra wiring space, integrated bushing
- NPT: Allows for the use of a variety of industry NPT fittings; versatile cord grip options (pg 159-160)

### Available for:

PF: Size C	PFQ: Size F
------------	-------------

## METAL HANDLE WITH CORD GRIP (FOR HIGH TEMP)



- Ideal for high temperature environments

### Available for:

PNHT: Size 1
--------------

## METAL HANDLE WITH NPT



- Add cord grip for strain relief (p159-160)
- Allows for the use of a variety of industry standard NPT fittings
- NPT to connect to a flexible conduit connector

### Available for:

DSN: Size 1, 2, 3, 4, 5	PN: Size 1	DSN Zone 2: Size 5
DS: Size 2, 3, 4, 5, 6	PNHT: Size 1	DS Zone 2: Size 2, 3, 4, 5, 6
Multipin: Size 1, 2, 3, 4, 5	DSDC: Size 2, 3, 4, 5, 6	DR Zone 2: Size 2, 3, 6
DR: Size 2, 3, 4, 5, 6		DSDC Zone 2: Size 2, 3, 4, 5, 6

## LARGE METAL HANDLE WITH CORD GRIP, MESH AND CABLE RANGE



- Easy handling for large cable
- Ergonomic dual grips
- Cord grip included
- Provides strain relief

### Available for:

DR: Size 7
------------

## METAL ANGLE HANDLE



- Ergonomic dual grips
- Reduces space and stress on device connection
- NPT: Allows for the use of a variety of industry NPT fittings; versatile cord grip options (pg 159-160)

### Available for:

PF: Size C	PFQ: Size F
------------	-------------

# INLET/PLUG CAPS

## Protective Inlet/Plug Caps

Neoprene caps provide an extra level of protection from dust, dirt, and rough handling for male plugs.



Typical for DSN, DS20, DS30, DS60, DS100C, DR30, DR50, DR100, DXN

Typical for DSN150, DS100, DS200, DR150, DR250, DR400

Typical for DN devices

Typical for PN devices

## Ordering Information

Model	Protective Inlet/Plug Cap
DSN20/DSN12c	61-1A426
DSN30/DSN24c	61-3A426
DSN60/DSN37c	61-6A426
DSN150	31-9A426
DS20/DR30/DSDC1	31-1A426
DS30/DR50/DSDC3	31-3A426
DS60/DSN100 DR100/DS7c/DR7c/DSDC6	31-6A426
DS100/DR150/DSDC9	31-9A426
DS200/DR250/DR400/DSDC2	39-2A426
DXN20	22-1A426
DXN30	22-3A426
DXN60	22-6A426
DN9c	19-1A126*
DN20c	19-6A126*
PN20/PN7c/PN12c	01-NA426
DXA1	28-1A426
CS1000	45-3A126

\* Non-Watertight

## Padlockable Inlet/Plug Caps

Padlockable caps can be locked in place to prevent unwanted removal.



Typical for: DSN20, DSN30, DSN60, DSN100  
DS20, DS30, DS60, DR30, DR50, DR100  
DSDC1, DSDC3, DSDC6

Typical for: DS60, DS100, DS200  
DSN100, DSN150, DR100, DR150, DR250, DR400,  
DSDC9, DSDC2

## Ordering Information

Model	Padlockable Inlet/Plug Cap
DSN20/DSN12c	61-1A826
DSN30/DSN24c	61-3A826
DSN60/DSN37c	61-6A826
DSN150/DS100/DSDC9/DR150	DS9MC (Alum) 🔒
DS20/DSDC1/DR30	DS1PC (Poly)
DS30/DSDC3/DR50	DS3PC (Poly)
DS60/DSDC6/DR100/DS7c/DR7c	DS6MC (Alum)/DS6PC (Poly) 🔒
DS200/DSDC2/DR250/DR400	DS2MC (Alum) 🔒

**Notes:** A 5/16" diameter lock/pin is needed for proper operation. Do not substitute a smaller diameter lock/pin.

Model	Springloaded Padlockable Cap
DSN30	61-3A226 🔒
DSN60	61-6A226 🔒
DS20/DR30/DSDC1	31-1A226 🔒
DS30/DR50/DSDC3	31-3A226 🔒
DS60/DS7c/DR7c/DR100/ DSDC6 (Poly)	31-6A226 🔒
DS60/DS100C/DS7c DR7c/DR100/DSDC6 (Metal)	39-6A226 🔒

**Notes:** A 5/16" diameter lock/pin is needed for proper operation. Do not substitute a smaller diameter lock/pin.

🔒 The inlet lockout hole is not completely sealed off by the DS\_MC and Springloaded Padlockable caps. If environmental protection is needed while the plug is disconnected, the inlet should be ordered without the standard hole.

Example:

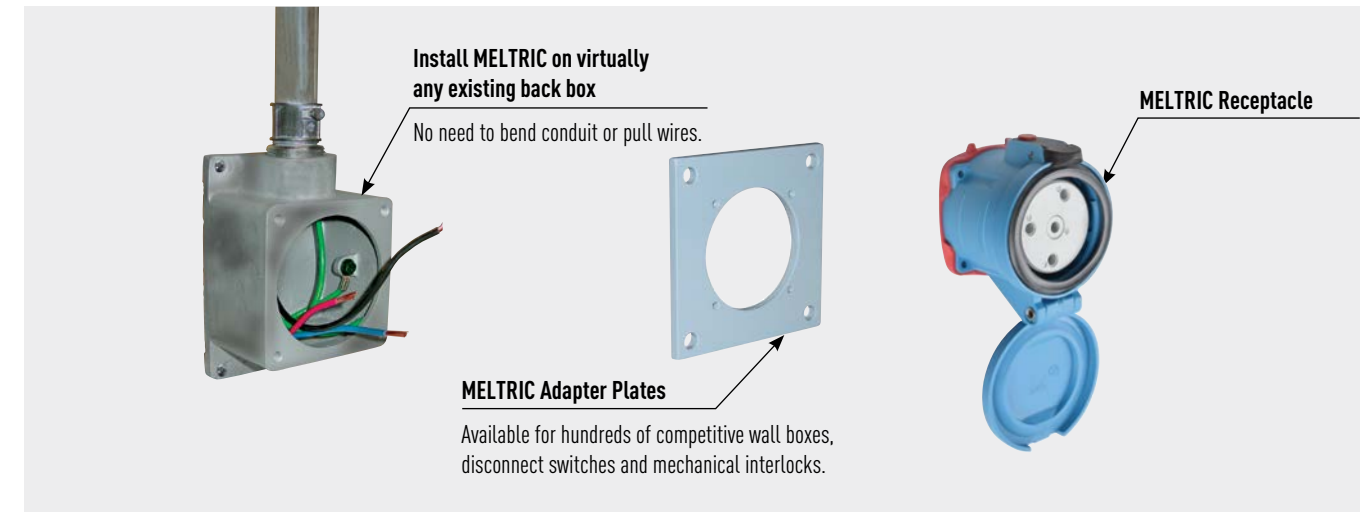
To order an inlet without a lockout hole add suffix -A155 to the inlet part number.

DS60 Metal inlet 2P+G= 37-68162-A155

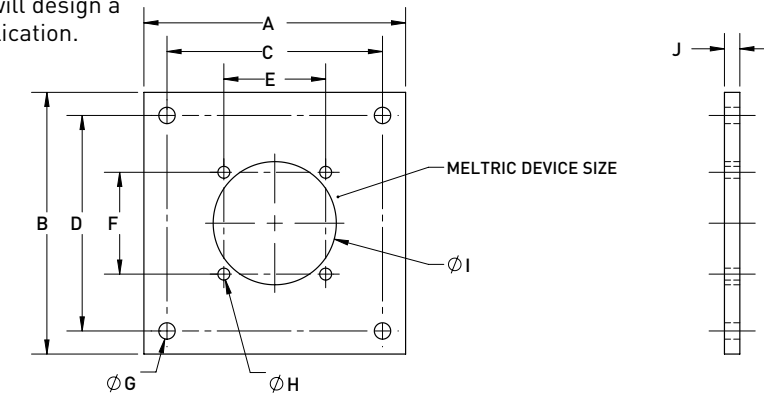
# ADAPTER PLATES



Updating your facility with MELTRIC plugs and receptacles is simple and affordable with MELTRIC adapter plates. They allow the mounting of MELTRIC devices to existing boxes previously used for competitive devices. This avoids the cost and hassle of installing new boxes and performing associated re-piping and rewiring.



If an adapter plate for the box you have is not listed, contact Customer Service and MELTRIC will design a new one to fit your application.



Dimensions Listed in Inches

Part #	MELTRIC Device Size	A	B	C	D	E	F	DIA. G	DIA. H	DIA. I	J
CHARE23	2	3.38	3.38	2.734	2.734	1.890	1.890	.257	8-32	2.25	.25
CHARE36	3	4.25	4.25	3.500	3.500	2.178	2.178	.332	8-32	2.63	.25
CHARE56	4	4.25	4.25	3.500	3.500	2.589	2.589	.375	10-32	3.25	.25
AP-RAC04X4-FS*	1,2,3	4.06	4.06	-	-	1.875	3.250	-	.160	2.25	.06
AP-CARLONFS-MA1*	1,2,3	3.13	4.54	1.875	3.281	2.500	3.750	.150	10-32	2.00	.25
AP-CHAR341-DSN30	2	3.38	3.38	2.720	2.720	1.890	1.890	.234	8-32	2.25	.25
AP-HBL-DSN30	2	3.75	3.75	3.125	3.125	1.890	1.890	.188	8-32	2.25	.25
AP-00052*	1,2,3	3.00	4.75	1.875	3.250	2.500	3.750	.150	10-32	2.25	.25

**Note:** \* Plate designed for use with an angle adapter.

When using an adapter plate, the environmental rating of the plug and receptacle cannot be guaranteed.