

MULTIPIN PXN12c

PRODUCT FEATURES



Metal Casing

Provides excellent durability and protection.

IP65/IP66 Watertightness

Environmental rating is achieved as soon as the plug is latched to the receptacle. There is no additional rings to tighten.

Lid

Provides additional protection from harsh environments.

Recessed Contacts

Provides IP2X protection from live electrical parts.

Locking Provision

Turn triangular screw with special tool (provided) to prevent plug removal.

Spring Loaded Butt-Style Contacts

Ensures optimal contact force and superior electrical performance over thousands of operations.

Silver-Nickel Contacts

Silver-nickel contact material provides superior conductivity, durability and corrosion resistance.

Hazardous Location Listings

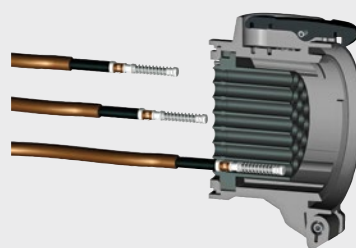
| ATEX |
|---|
| II 2 GD Exe IIIC Gb Ex tb IIIC Db Suitable for Zone 1 & 2 (gas) 21 & 22 (dust) |
| Ex ia or ib IICT6 Gb |
| IECEX LCIE 14.0041X/LCIE 07 ATEX 6070X |

Highlighted Feature

- Crimped Contacts**
 PXN12c devices now feature contacts that can be crimped or soldered. Each device is supplied with 13 contacts so that the product can be set up to suit application needs.

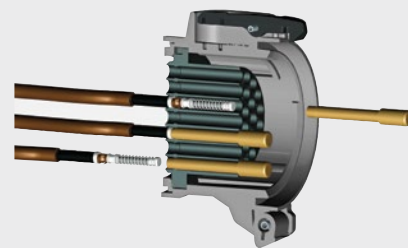
Simple Assembly and Disassembly

DSN37c shown



Assembly

To insert contacts when they have been wired is simple. Push wired contact into rear of insulator until it stops to complete the installation.



Disassembly

To remove, use the tool provided. Push tool from front onto contact until tool stops. Contact is then released at rear of insulator.

PXN12c Hazardous Location Multipin – 10A

Devices rated for hazardous locations are not returnable.

Connector
(female recept w/handle)



or

Receptacle/Angle
(female)



or

Recept/Angle/Box
(female)



North American UL/CSA Configurations

| Voltage | Polarity | Cable Range | Part # Metal | Part # Metal | Part # Metal |
|---------|----------|-------------|--------------|--------------|--------------|
| 220V | 11P+G | .35 - .63" | 06-A3001-25M | 06-A7001 | 06-A0001-25M |
| 220V | 11P+G | .47 - .82" | 06-A3001 | 06-A7001 | 06-A0001 |

For international configurations (IEC/CE) visit meltric.com/international-catalog or contact customer service at 800.433.7642.

Plug
(male inlet w/handle)



or

Inlet/Angle
(male)



or

Inlet/Angle/Box
(male)



North American UL/CSA Configurations

| Voltage | Polarity | Cable Range | Part # Metal | Part # Metal | Part # Metal |
|---------|----------|-------------|--------------|--------------|--------------|
| 220V | 11P+G | .35 - .63" | 06-A1001-25M | 06-A9001 | 06-A6001-25M |
| 220V | 11P+G | .47 - .82" | 06-A1001 | 06-A9001 | 06-A6001 |

For international configurations (IEC/CE) visit meltric.com/international-catalog or contact customer service at 800.433.7642.

ACCESSORIES

PROTECTIVE CAP



01-2A126

EUROPEAN CRIMPING TOOL



61-CA500

BAG OF 13 FEMALE CONTACTS



01-AA213

Includes insulation sleeves and ferrules

MULTI-CONTACT REMOVAL TOOL



61-CA593

CRIMPER TOOL (Greenlee or equal)



4CN30

BAG OF 13 MALE CONTACTS



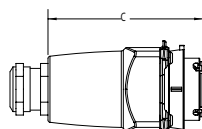
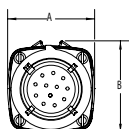
01-AA113

Includes insulation sleeves and ferrules

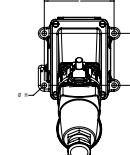
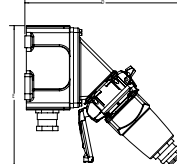
PXN12c DIMENSIONS – Provided in inches

Dimensions are for reference only and may change depending on accessories used. For precise dimensions contact MELTRIC Engineering.

Plug



Wall box/angle/receptacle/plug



| PRODUCT | A | B | C | D | E | F | G | H |
|---------|-----|------|------|------|------|-----|------|------|
| PXN12c | 2.3 | 2.42 | 4.09 | 8.37 | 7.54 | 3.7 | 2.76 | 0.26 |