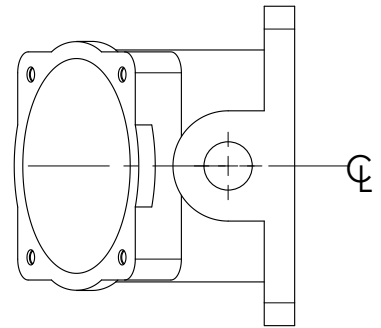
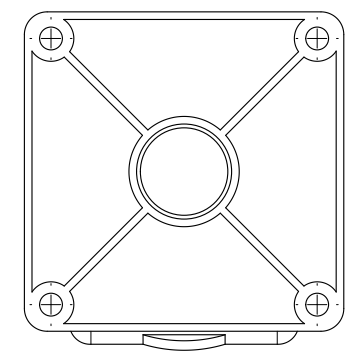
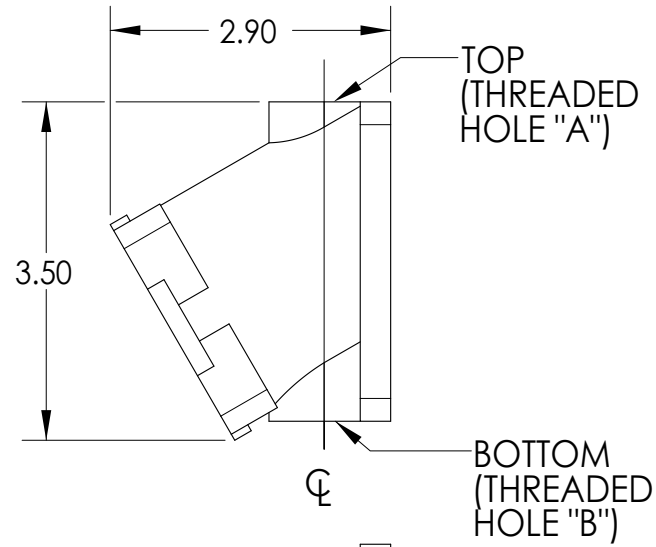
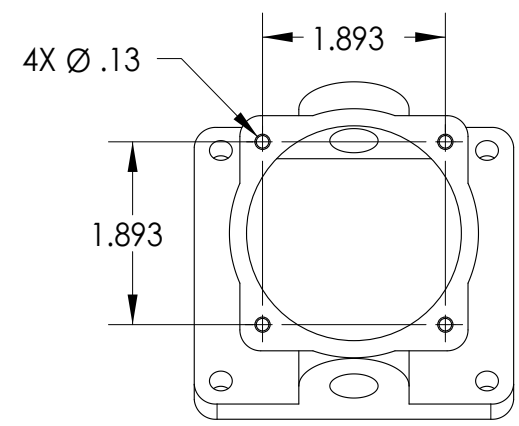
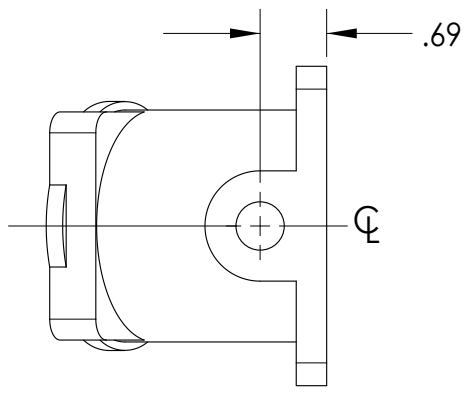
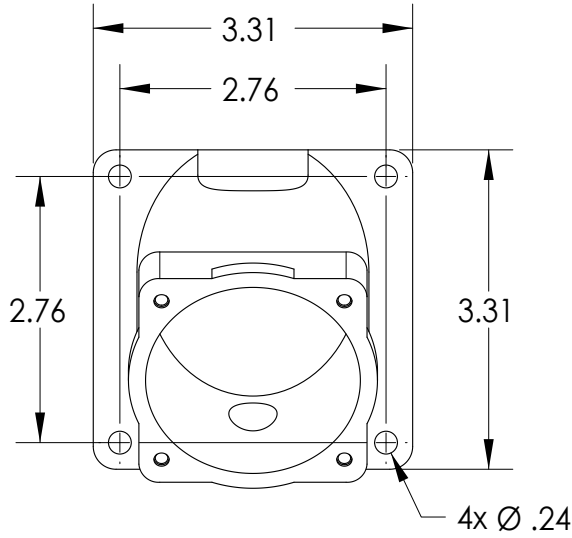




This drawing is the property of MELTRIC Corporation, Franklin (Milwaukee), Wisconsin, USA. Any unauthorized copying of this drawing by any means, or disclosure of its contents to any person not authorized by MELTRIC Corporation or its agents to receive it, is strictly prohibited.



PART NUMBER	THREAD "A"	THREAD "B"
22-3A023-34-T	3/4" NPT	20mm
22-3A023-34-B	20mm	3/4" NPT

INTERNAL VOLUME : 8.7 CUBIC INCHES

TOLERANCES UNLESS OTHERWISE SPECIFIED MACHINED SURFACES $\sqrt[125]{\text{MAX}}$ GROUND SURFACES $\sqrt[32]{\text{MAX}}$ ANGLE TOLERANCE $\pm 1^\circ$ REMOVE BURRS & SHARP EDGES TO .015 MAX.  DIMENSIONS SHOWN IN OVALS ARE INSPECTION DIMENSIONS.		ENGLISH $0.X \pm 0.05$ $0.XX \pm 0.01$ $0.XXX \pm 0.005$		 A COMPANY OF MARÉCHAL ÉLECTRIC	
DRAWN	APPROVED	DRAWING TITLE: DXN30 POLY 30° WALL BOX			
DATE:	SCALE NTS	MATERIAL: BLACK POLY			
SHEET: 1 OF 1	PART NUMBER 22-3A023-34-x			REVISION	